

HEADQUARTERS 306TH BOMBARDMENT GROUP (H)
Office of the Intelligence Officer
A.F.O. # 634

29th May, 1943

SUBJECT: Intelligence Report.

TO.....: Commanding Officer, 306th Bombardment Group (H).

1. Narrative.

24 a/c of the 306th Group took off at 13:40 to bomb St. Nazaire. Two returned early. 22 were over the target at 17:07, one failing to bomb because bomb bay doors would not open. Twenty returned to base at 19:15, two landed away. Both have since returned, and are included in this report. Route was substantially as ordered, weather good, with clear visibility over target.

2. Bombing.

With a good run at approximately 270 degrees mag. and bombing at 25,000 feet, results look fairly good. There were a number of bursts in the water, and some were short, but several direct hits were reported on and near the A.P. The bursts inside the basin were close to the sub pens and probably produced blast damage. Both sides of both basins were hit.

3. Abortives.

One, with broken oil line #2 engine, turned back at Salisbury England at 15:01 hours, 17,000 feet. One, with engine trouble, no oil pressure on #2 and #3, supercharger on #1 ran away, turned back 5 miles N.W. Guernsey at 16:15 hours.

4. E/A encountered.

Enemy opposition was very slight on this group, only one or two direct attacks being reported, and these were not pressed home. Two crews report one bomb dropped one thousand yards beyond formation. No make no claims.

5. Flak.

Red bursts reported off Guernsey, and off St. Brieuc. Over the target, the flak was moderate, accurate as to altitude, off on deflection. Experienced crews report it not nearly as intense as previously encountered.

JOHN B. WRIGHT,
Major, Air Corps,
Group 8-2.

DECLASSIFIED PER EXECUTIVE ORDER 12356, Section 3.3, 74500

WARA

Date 1/8/41

By RLB/DFAC

HEADQUARTERS 306TH BOMBARDMENT GROUP (H)
Office of the Intelligence Officer
A.P.O. #634

29th May, 1943

Subject: Hot News Report.

To.....: Commanding Officer, 306th Bombardment Group (H).

1. Up to six B-17's reported in distress.

At 1706, one B-17 before target, was hit by flak. (This A/C dropped its bombs) Crashed. 7 chutes.

At 1707 over target, a B-17 was hit by flak, and right wing torn off. This ship from group ahead. No chutes.

At 1721, a B-17 under control was attacked by 4 E/A while straggling and trying to catch up. Four chutes. A/C continued after chutes were seen and crashed at 1729 five miles south of Auray.

At 1731, B-17 turned off to right under control, no fighters there. #4 engine smoking. Ten chutes. Ship then went into spin and crashed between Laurenan and Nonscourtour.

One B-17 over French Coast just after leaving mainland at 1742 turned back inland, near Traguier. One crew reports a big flash from this ship and says it blew up.

Our A/C #824, letter B, radioed a B-17 in water burning at 1806, at 50 degrees 07 minutes N, 02 degrees 45 minutes W. Phoned to Wing in hot news report.

FLAK DAMAGES:

B 17F No. 42-5826, 369th Sq., Flak entered Radio Compt damaging radio equipment. Plane to be out of status approximately 24 hours.

B 17F No. 42-29564, 367th Sq., 1 very slight flak hole in plane.

B 17F No. 42-30163, 368th Sq., 5 flak holes, nothing serious.
(4 holes in right outboard wing and one hole on right horiz. stab.)

B 17F No. 42-29777, 423rd Sq., No. 4 main tank hit by flak. Tank severely damaged and to be changed
Plane to be out of status approximately 24 hrs

B 17F No. 41-24629, 369th Sq., Right horiz. stab. slightly hit by flak.

B 17F No. 42-5086, 369th Sq., 1 small flak hole in de-icer boot between No. 1 and 2 engines. Nothing serious.

DECLASSIFIED PER EXECUTIVE ORDER 12356, Section 3.3, 245005
BY RLB/BAC
MABA Date 1/8/91

TE ORDER 12356, Section 3.3, 245005
MABA Date 1/8/91

By RLB/JAC

NARA Date 1/18/91

COMPOSITE

High right

161
25300

825
25300

741
25100

502
25300

084
25000

SHUREL J. OWEN,
Captain, Air Corps,
Asst. E-2.

TRACK CHART

DATE 29 May 1943

Planned
Actual

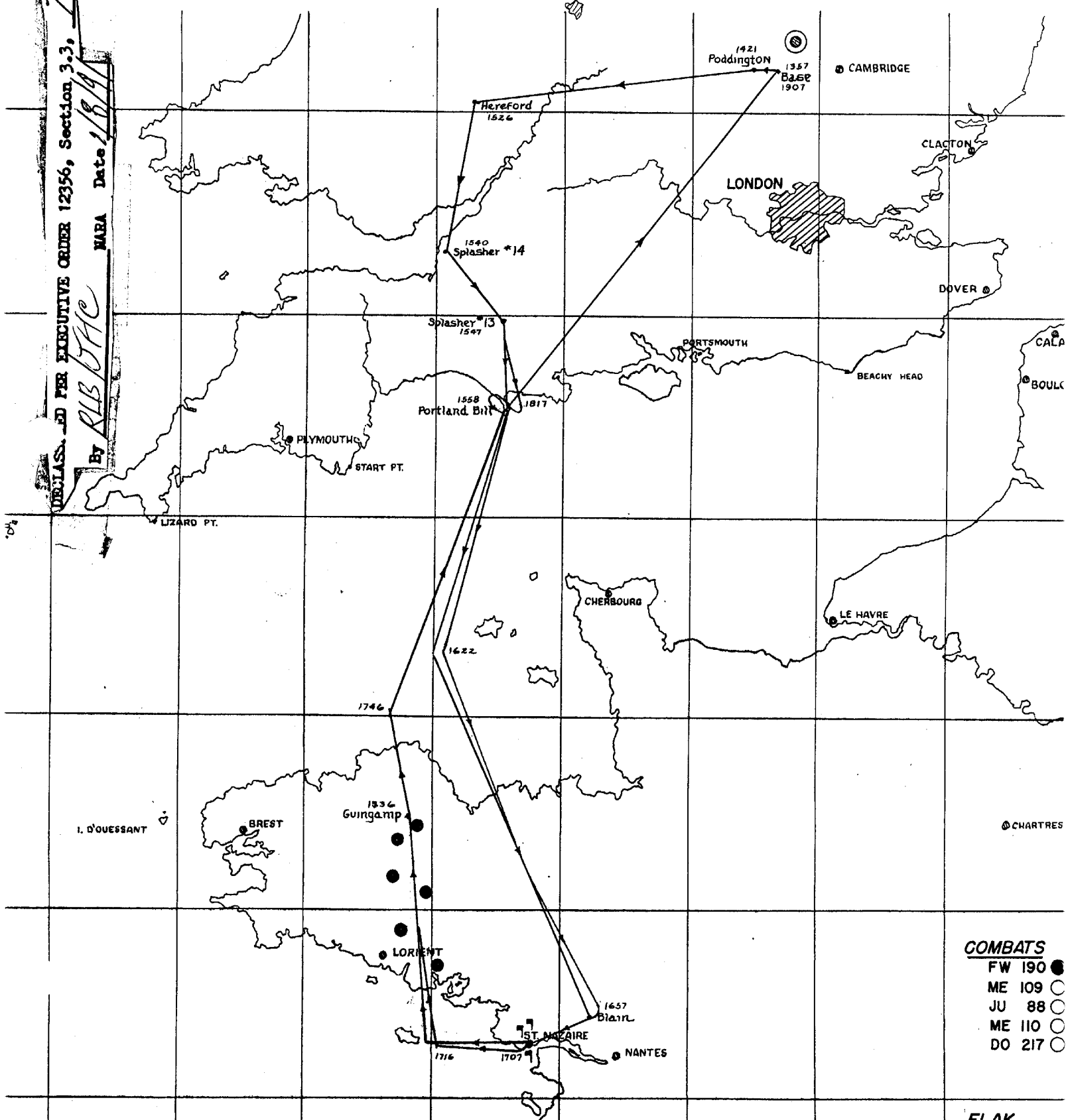
Route followed by

306th Bombardment Group (H)

St. Nazaire

MO
CON
ST F

DECLASSIFIED PER EXECUTIVE ORDER 12356, Section 3.3, 74500
 By RLB/BAC MARA Date 1/8/94



- COMBATS**
- FW 190 ●
 - ME 109 ○
 - JU 88 ○
 - ME 110 ○
 - DO 217 ○

FLAK

DECLASSIFIED PER EXECUTIVE ORDER 12356, Section 3.3, 745005

By RLB/JAC NARA Date 1/8/91

box 641



S.A. 340
ST. NAZAIRE
29 · 5 · 43
Approximate Bomb Plot.
Neg. No 24991.

C O N F I D E N T I A L

Crew Library

HEADQUARTERS
VIII BOMBER COMMAND
A.P.O. 634

Bomber Command Narrative of Operations
Day Operation - 29 May, 1943.
Mission No. 61

- TARGETS: I - St. Nazaire - U-Boat Installations
 II - La Pallice - U-Boat Installations
 III - Rennes - Naval Storage Depot.

The main attack was directed at St. Nazaire where 147 B-17s of the 1st Wing successfully bombed the submarine installations in the Bassin de St. Nazaire and the Bassin de Penhouet. 34 B-24s from the 2nd Wing bombed U-boat installations at La Pallice with good results. 72 B-17s of the 4th Wing were dispatched to bomb the Naval Storage Depot at Rennes, and 57 bombed with poor results, most bombs falling in residential areas. Fighter support was furnished to 1st and 4th Wings by Spitfires and P-47 Squadrons. 14 a/c are missing from the three operations while claims amount to 25 - 5 - 15.

Diversionsary attacks were made on Caen A/D and Cherbourg-Maupertus A/D by R.A.F. bombers and fighters.

Unit and Target	Number of A/C (Dispatched Attacking Abortive Lost)					Claims	Personnel Casualties (Killed Wounded Missing)		
	A.	B.							
ST. NAZAIRE									
1st Wing									
91	23	21	2	0	0	0-0-0	0	1	0
92	22+	19	3	0	0	0-0-0	0	0	0
303	30	28	2	0	1	3-0-1	0	0	10
305	25+	21	4	0	3	0-0-0	0	9	21
306	24	21	3	0	0	0-0-0	0	0	0
351	21	16	5	0	1	1-0-0	0	0	10
379	24	21	3	0	3	2-0-0	0	0	30
	<u>169+</u>	<u>147</u>	<u>22</u>	<u>0</u>	<u>8</u>	<u>6-0-1</u>	<u>0</u>	<u>10</u>	<u>71</u>
LA PALLICE									
2nd Wing									
44	21	20	1	0	0	0-0-0	0	0	0
93	17	14	3	0	0	0-0-0	0	0	0
	<u>38</u>	<u>34</u>	<u>4</u>	<u>0</u>	<u>0</u>	<u>0-0-0</u>	<u>0</u>	<u>0</u>	<u>0</u>
RENNES									
4th Wing									
94	18	16	2	0	3	5-1-3	1	2	32
95	18	18	0	0	2	6-0-5	0	1	22
96	20	20	0	0	1	8-4-6	0	7	10
Composite #	16	3	13	0	0	19-5-14	0	0	0
	<u>72</u>	<u>57</u>	<u>15</u>	<u>0</u>	<u>6</u>		<u>1</u>	<u>10</u>	<u>64</u>

C O N F I D E N T I A L

DECLASSIFIED PER EXECUTIVE ORDER 12356, Section 3.3,
 By *RLB/BAC* NARA Date *1/8/91*

745005

C O N F I D E N T I A L

Abortive A - Mechanical, equipment or personnel failures.

B - Weather, recall, or enemy action.

+ - 7 a/c of 92 Group and 1 a/c of 305th Group were YB40s.

- Composite Group composed of 4 a/c from the 94th, 2 from the 95th and 10 from the 96th Groups.

PART I - 1st Wing

TARGET: U-Boat Installations at St. Nazaire.

BOMBING RESULTS: 140 B-17s dropped 277x2000 G.P. at 1706-1711 hours from 22,500-25,000 ft., with fair results. Photographs taken during the attack show bursts across the dock area and shipping basins. Hits are seen near both inner and outer ends of the E. Lock, although no direct hit on the lock is seen. One burst is noted immediately outside the U-boat Pens in the Basin de St. Nazaire, and in the Bassin de Penhouet three bursts are very close to a floating dock which at the time of the attack carried a small vessel. Hits are seen on the workshops of the Chantiers and Ateliers de Penhouet.

REASONS FOR FAILURE TO BOMB: 21 a/c failed to bomb, 20 because of mechanical and equipment failures and 1 because of personnel failure. 1 of the 8 YB40s taking part in the mission returned early because of mechanical failure.

ENCOUNTERS: E/a opposition was light. Groups reported that 20-40 e/a mostly FW 190s with a few ME 109s and 1 or 2 ME 110s and JU 88s began attacks just before the I.P. and continued over the target and out to French Coast. Attacks were from 3 to 6 o'clock from the nose, usually high or level, and very few were pressed home vigorously. E/a were observed following the formation and in the main attacking cripples. Two crews reported one aerial bomb was dropped 1000 yds. beyond formation. Varied markings of the e/a included yellow, red, and white noses, fuselages of green-gray, blue, mottled camouflage, solid brown, white belly and tan top; black and silver ME 109s; and black and yellow striped FW 190s. Some FW 190s had white markings similar to those of P-47s.

CASUALTIES: - Personnel: 10 crew members were wounded and 71 are missing. 9 crew members from lost a/c of 305th Group were picked up by Air Sea Rescue E. of Start Point.

Equipment: 8 B-17s were lost, 6 due to flak, 1 to e/a, and 1 for reasons unknown.

Estimated Battle Damage: 58 B-17s - "A".

FIGHTER SUPPORT: 10 Spitfire and 3 P-47 Squadrons furnished withdrawal cover from the vicinity of Guingamp to the English coast. Diversionary attacks were made on Caen A/D by 11 Venturas supported by Spitfires and on Cherbourg-Maupertus A/D by 1 Squadron of Typhoon bombers escorted by Typhoons.

ROUTE: Portland Bill to 49°20'N, 05°00'W; to Redon; to target; to 10 miles E. of Belle Isle; to Guingamp; to 49°00'N, 03°20'W; to Portland Bill; to bases.

WEATHER: At take-off there was 3/10-5/10 cirrus at estimated height of 25,000-26,000 ft., with 2/10-4/10 cumulus having 4,000 ft. base and 6,000 ft. tops. Visibility was 4-5 miles in haze. From bases to English coast there was 4/10-7/10 variable cirrus at estimated 25,000-27,000 ft., with 3/10 altocumulus and altostratus at estimated 10,000-15,000 ft. Medium cloud decreased to nil across the Channel with high cloud remaining the same and no low cloud. Visibility of 6-10 miles in SW England improved to 15-20 miles over the Channel and France. At the target there was 6/10 cirrus at estimated 27,000 ft., no

C O N F I D E N T I A L

DECLASSIFIED PER EXECUTIVE ORDER 12356, Section 3.3,
By RLB/DAC Date 1/8/91

145003

low or medium cloud, and a downward visibility of 20 miles. Conditions on the route back to the English coast were the same as on the route in to target, with bases on return having 5/10 cirrus, 4/10-6/10 altocumulus and altostratus, and no low cloud. Visibility was 6 miles. Persistent contrails were observed at 24,000 ft. from 100 miles W. of bases to English coast on route out. Winds were satisfactory. Temperature over target at 25,000 ft., was -24°C.

OBSERVATIONS: An apparent Army Camp was seen at edge of woods near Floornel, France, with an estimated 100 one-storey buildings of round roof construction. Two large truck convoys of about 100 vehicles were seen headed SE between Floornel and Redon. A concentration of vehicles, barracks and new roads was reported NW of Redon at 47°51'N - 02°13'W. Military construction was reported at Renac, France, and other construction 1 mile N. of St. Nazaire. A large factory with many new buildings was seen at 48°03'N., 01°45'W. An apparently new A/D reported 10 miles E. of Lorient had two crossed uncamouflaged runways. An A/D was also seen near Collinee and Augan. A B-17 was seen through binoculars on A/D at 47°47'N, 02°52'W., just NW of field. SW of Rennes at 47°57'N, 02°22'W, also seen through binoculars, were about 200 barracks buildings and 8 Nissen huts. A large reservoir was observed at 48°26'N, 02°51'W. Considerable construction was noted in shipyards south of Basin at St. Nazaire. A 4-gun (Flak) battery was seen at Escoublac and two 4-gun batteries seen on NW side of Guernsey Island. The harbor at Painbol contained at least 1 large M/V and 6 to 8 smaller vessels. Two large M/V seen in Lorient harbor. Eight M/V were reported at Etel, France, which at 23,000 ft., appeared to be transports. One report stated that e/a attacked with air-to-air bombs (no results stated), and one crew reported seeing 6 red balloons rising toward the formation and exploding with a red flash at about their altitude. Smoke screen at target was ineffective, and boats appeared to be putting up smoke screen south of target. Two rows of smoke pots were seen around south side of Morbihan Bay. Smoke screen at Lorient were reported as ineffective, except for one group which reported them as effective.

PART II - 2nd Wing

TARGET: U-Boat installation at La Pallice.

BOMBING RESULTS: 34 B-24s of the 2nd Wing dropped 99x2000 G.P. in the target area. Strike photographs show bursts near a vessel in Dry Dock No. 1., on or near the new lock under construction and on buildings and warehouses surrounding the basin. Several hits can be seen in the immediate area of the entrance locks. Photographs cover only part of the raid. However, the crews report all bombs hit area close around the basin and that target pin point was well covered.

REASONS FOR FAILURE TO BOMB: 3 B-24s returned early due to mechanical failures, and 1 B-24 jettisoned on approach to target.

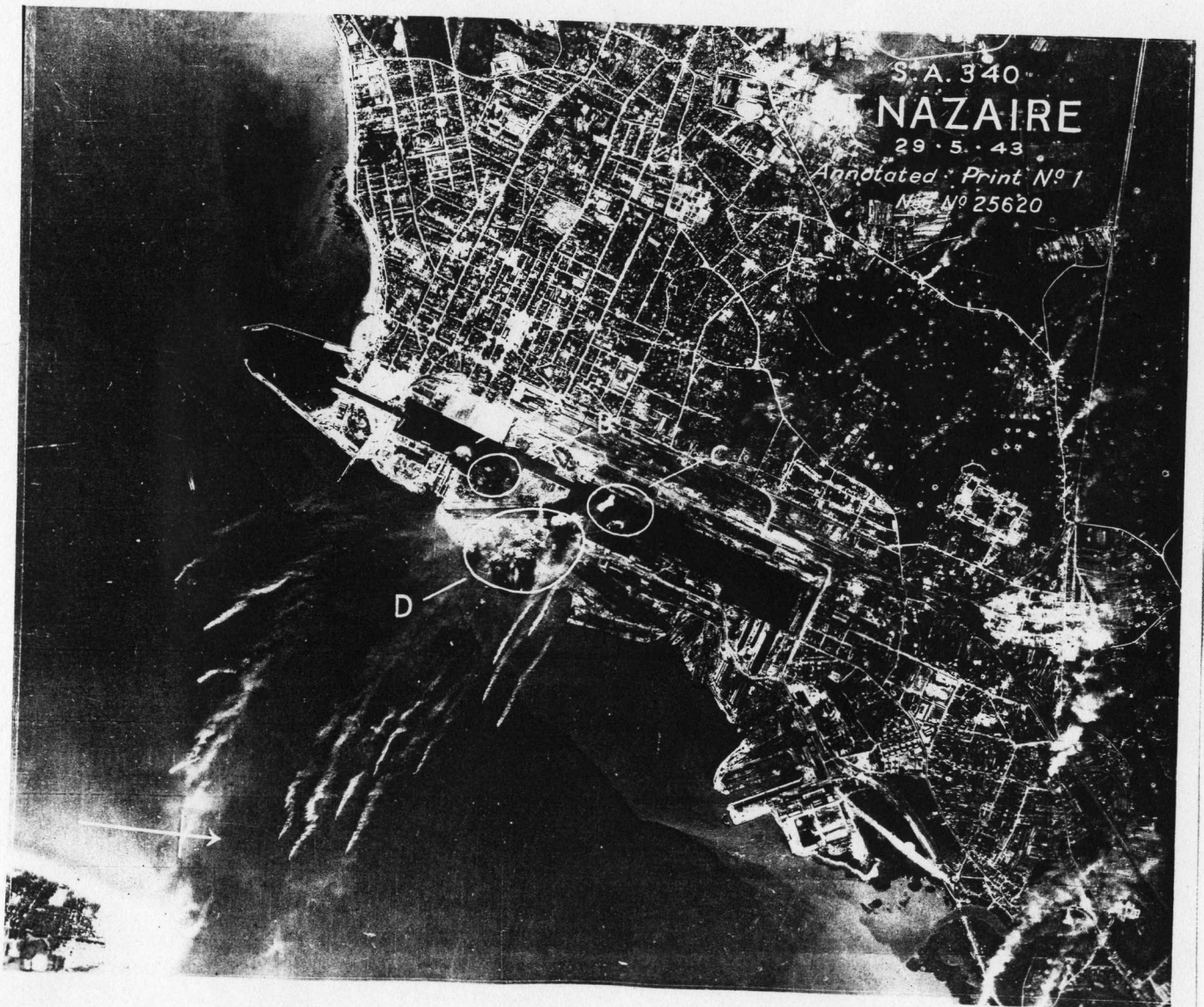
ENCOUNTERS: 3 or 4 JU 88s were observed over target area, one of which made several passes at a B-24 out of formation.

CASUALTIES: - Personnel: None
Equipment: No Losses
Estimated Battle Damage: None

FLAK: Slight flak of poor accuracy was encountered over the target area. No other flak encountered.

FIGHTER SUPPORT: None furnished.

745005
DECLASSIFIED PER EXECUTIVE ORDER 12356, Section 3.3,
By RLB/BAC MABA Date 1/8/91



S.A. 340

NAZAIRE

29.5.43

Annotated Print No 1

No 25620

D

By KLB/DHC
Date 1/8/49
NARA

DECLASSIFIED PER EXECUTIVE ORDER 12356, Section 3.3, 7/15/2005

By RLB/bac NARA Date 1/8/91



Most of the smoke from the early bursts is seen to have cleared away.

P. About 15 bursts on waste land and off shore N.E. of the docks.

Q,R. About 25 bursts in the R. Leire above St. Nazaire.

Annotated prints Nos. 1-5 and an approximate bomb plot accompany this report.

By RLB/BAC NARA Date 1/18/99



E, F, G. Smoke from the bursts E, F, G above.

J, K, L. Smoke from the bursts J, K, and L above.

M. 4 bursts in the Bassin de Penhouet.

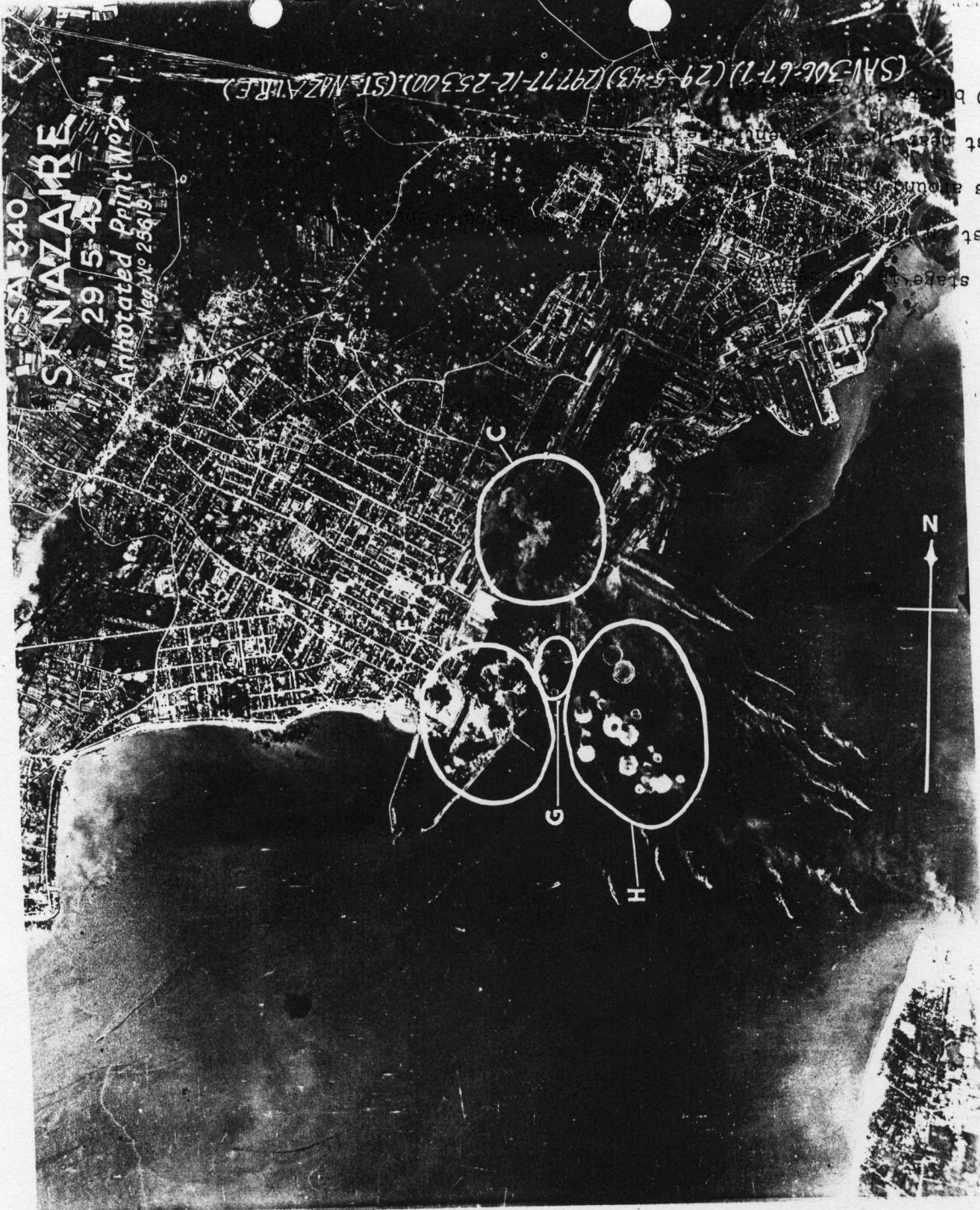
N. 3 bursts on the workshops of the Chantiers and Ateliers de Penhouet.

O. About 25 bursts offshore.

Smoke screen from barges shown by arrow.

DECLASSIFIED PER EXECUTIVE ORDER 12356, Section 3.3, 74-005

By RLB/BAC NARA Date 1/8/91



- H. About 20 bursts in open water.
- G. One burst near the outer entrance to the East Lock.
- F. 7 bursts around the South Entrance Lock.
- E. One burst in the water immediately outside the U-boat Pens.
- C. A later stage in the development of C above.

- C. A later stage in the development of C above.
- E. One burst in the water immediately outside the U-boat Pens.
- F. 7 bursts around the South Entrance Lock.
- G. One burst near the outer entrance to the East Lock.
- H. About 20 bursts in open water.

- MAEA Date 1/11/77
- C. A later stage in the development of C above.
 - E. One burst in the water immediately outside the U-boat Pens.
 - F. 7 bursts around the South Entrance Lock.
 - G. One burst near the outer entrance to the East Lock.
 - H. About 20 bursts in open water.

ROUTE: Bases to Lands End, to St. Marys, to 48°30'N-07°30'W, to 47°00'N-06°30'W, to 45°40'N - 04°00'W, 45°30'N - 01°40'W, to 46°08'N - 01°26'W, to target. Turn right after bombing to 46°20'N - 04°30'W, to 47°20'N - 06°30'W, to 48°30'N - 07°00'W, to Lands End, to Advance Bases.

WEATHER: Generally the same as in Part I. At the target there was no low or medium cloud with horizontal visibility 5-10 miles in haze.

OBSERVATIONS: Mission was uneventful. Route followed was mainly over water. One convoy consisting of 8 freighters was reported at 46°15'N - 05°05'W.

PART III - 4th Wing

TARGET: Naval Stores Depot at Rennes.

BOOMBING RESULTS: 57 B-17s dropped 530x500 G.P. from 22,000-25,000 ft., at 1601-1605 hours. Target was approached from the NW and the bombs fell in areas North and East of the target - mostly in the town residential areas and open country outside the town. There were no hits on the target. Among the bursts seen in the town are several direct hits on the Arsenal and nearby Colambier Barracks.

REASONS FOR FAILURE TO BOMB: 15 a/c failed to bomb - 2 returned early because of mechanical failures, 1 did not reach the formation and 12 failed to bomb because of inability of composite group to get in position over the target.

ENCOUNTERS: E/a opposition started when the P-47 support left the formation at the I.P. 65 to 75 FW 190s and ME 109s attacked from this point to over the target and out until formation was met by Spitfire cover 15 to 20 miles off the French coast. Attacks were vicious and made mostly from 2 o'clock, coming in from about 45°, following on down under the formation, turning and climbing back up again to repeat. Many attacks, made singly and in groups, came head on from 11 to 1 o'clock. FW 190s came in and rolled through the formation; the ME 109s dived straight on through the formation. The last two groups report attacks were made first on the low group, following into the second and then breaking up. E/a had yellow, red and white noses; some were all silver and all black; and a few had white belly markings.

CASUALTIES: - Personnel - 64 crew members missing; 1 was killed, 2 were seriously wounded; and 8 were slightly wounded.

Equipment - A total of 6 a/c are missing. At 1623 hrs., about 15-20 miles NW of Rennes, a B-17 of the 95th Group was observed to be hit by flak and went into a steep dive out of control. It pulled up through a high squadron striking another B-17 of the 95th Group in the tail. This latter a/c was last seen going down in a 30° descent under partial control. The first B-17 was last observed in steep dive at 16,000 ft., with an ME 109 attacking from the tail. These are probably the 2 a/c of the 95th Group reported down in the target area with 6 chutes reported as opening. The following locations where a/c went down and number of parachutes seen to open were reported: 1 a/c 20 miles NW of Rennes with 10 chutes reported to open; 1 a/c between French Coast and Jersey Island with 5 chutes reported to open; 1 a/c approximately 48°05'N - 02°40'W., with 1 chute reported to open; and 1 a/c just south of Portland Bill. One a/c of the 94th Group crash landed at Northolt.

Estimated Battle Damage: 30 a/c in category "A" and 1 a/c in class "E".

INTERROGATION FORM

Robinson

SQUADRON 367 368 369 423 A/C Number 3142 Letter _____ Date 29/5/43

Bomb Load 2-2000 H.E. Incend.

Position in Formation

Time Took Off 1328 Time Landed 1605

			X		
	X	X	X	X	X
	X	X	X	X	X
	X	X	X	X	X
	X	X	X	X	X

1. HOT NEWS to be phoned in? Yes No
Details:

CREW: Give Rank and Initials

Friendly A/C in any kind of distress?
(Give position, time, altitude, full details)

Pt. R.L. Robinson Pilot
 _____ CO-P
 _____ Nav.
 _____ Bomb.
 _____ Radio
 _____ Top T.
 _____ Ball T.
 _____ R. Waist
 _____ L. Waist
 _____ Tail G.

2. TARGET ATTACKED:

Aborted

Primary Time:

Alternate Height:

Last Resort Heading:
(circle)

Duration Bomb Run:

3. Number of BOMBS dropped on target: Jettisoned: Returned: Abortive:

4. Observed RESULTS OF BOMBING: (For this plane or others) Brought bombs back

Own Bombs: Turned back at Salisbury, England

#2 oil line, broke inside engine. Attitude at time

Other Bombing: connection of return 17,000 ft. started back at 1501 hours.

5. Any PHOTOGRAPHS taken: Yes? No?

6. GROUND TARGETS ATTACKED BY GUNFIRE AND RESULTS:

7. ROUTE (If different than ordered) (If ABORTIVE give time, place, height of turn; reason for returning early, and disposition of bombs.)

8. WEATHER: (If it affected mission)

9. FLAK: Encountered on way out, at target and on way home.

Time	Place	Height of A/C	Type (light, heavy), intense, moderate or slight.	Color of Bursts	Location Bursts in relation to A/C	Accuracy

DECLASSIFIED BY EXECUTIVE ORDER 12356, Section 3.3, 745025

By R.L. BHC MARA Date 1/8/91

2

INTERROGATION FORM

Logan

SQUADRON 367 368 369 423 A/C Number 180 Letter _____ Date 29/6/43

Bomb Load 2-2000 H.E. Incendi _____ Position in Formation

Time Took Off 1348 Time Landed 1720

		X	X	X	X
		X	X	X	X
1. <u>HOT NEWS</u> to be phoned in? Yes No		X	X	X	X
Details:		X	X	(X)	X
		X			X

CREW: Give Rank and Initials

Friendly A/C in any kind of distress? (Give position, time, altitude, full details) St. Logan Pilot

CO-P

(Interrogated this one) 21 St. A.S. Morris Nav.

Bomb.

Radio

2. TARGET ATTACKED:

Primary Time: _____ Top T. _____

Alternate Height: _____ Ball T. _____

Last Resort Heading: _____ R. Waist _____

Duration Bomb Run: _____ L. Waist _____

_____ Tail G. _____

Aborted

Turned back 5 miles NW of runway at 1615 hours. Hgt 25,000. No enemy numbers.

3. Number of BOMBS dropped on target: _____ Returned: _____ Abortive: _____

4. Observed RESULTS OF BOMBING: (For this plane or others) Brought back bombs

Own Bombs: *The three new engines acted as though they had not been thoroughly tested. Supercharger on #1 ran away; no oil pressure on #2 or 3 (wasnt sure which). All three new engines over heated.*

5. Any PHOTOGRAPHS taken: Yes? No?

6. GROUND TARGETS ATTACKED BY GUNFIRE AND RESULTS:

7. ROUTE (If different than ordered) (If ABORTIVE give time, place, height of turn; reason for returning early, and disposition of bombs.)

8. WEATHER: (If it affected mission)

9. FLAK: Encountered on way out, at target and on way home.

Time	Place	Height of A/C	Type (Light Heavy) Intense, moderate or slight	Color of Bursts	Location of Bursts in relation to A/C	Accuracy

Crew observations about Flak:

DECLASSIFIED PER EXECUTIVE ORDER 12356, Section 3.3, 74500
 BY RIB/JAC DATE 1/18/91 NARA

1B17 - just before target - engine smoking.

INTERROGATION FORM

3

SQUADRON 367 368 369 (423) A/C Number 218 Letter J Date 29th May

Bomb Load 2x1000 (H.E.) Incendi

Position in Formation

Time Took Off 1344 Time Landed 1920

			X		
X	X		X	X	X
X			X		X
X	X		X	X	X
X			X		X

1. HOT NEWS to be phoned in? Yes No
Details:

1B17 - direct hit by Flack (no fighters there) 9 or 10 right wing
Friendly A/C in any kind of distress?
(Give position, time, altitude, full details)
crashed off - saw it fall separate -
burning - no parachute
hit between between 2 motors.
in Group ahead. no chutes -
Just after leaving target #1715

CREW: Give Rank and Initials

Marcotte Pilot

Van Troyen CO-P

Carvalho Nav.

MF Pitts Bomb.

S/S W.E. Houchens Radio

S/S E.J. Dostie Top T.

Sr J.O. Hooks Ball T.

Sr R.J. Husehle R. Waist

S/S J.C. Webb - L. Waist

Sr E.S. Mason Tail G.

2. TARGET ATTACKED:

Primary Time: 1701

Alternate Height: 25180

Last Resort Heading: 240°
(circle)

Duration Bomb Run: 30°

3. Number of BOMBS dropped on target: 2x1000 Jettisoned: Returned: Abortive:

4. Observed RESULTS OF BOMBING: (For this plane or others)

Own Bombs: at 1704 by mistake

1B17 - after target halfway thru forest P^a about 1730 #4 engine started burning - turned off to right - under control - 10 men came out - then ship went into spin. No fighters

Other Bombing: Group ahead lower - D.O. not hit target.

Hits on both sides of both BASINS

5. Any PHOTOGRAPHS taken: Yes? No?

6. GROUND TARGETS ATTACKED BY GUNFIRE AND RESULTS:

7. ROUTE (If different than ordered) (If ABORTIVE give time, place, height of turn, reason for returning early, and disposition of bombs.)

OK over France Good -

1-B-17-1720 - after target - under control - trying to catch up - 3 chutes while being attacked by 4 fighters - never saw it crash.

8. WEATHER: (If it affected mission)

Good over France - but good over England.

9. FLAK: Encountered on way out, at target and on way home.

Time	Place	Height of A/C	Type (light, heavy) Intense, moderate or slight	Color of Bursts	Location Bursts in relation to A/C	Accuracy
------	-------	---------------	---	-----------------	------------------------------------	----------

Intense over target - mild compared to what it has been - accurate - in bursts that suggested continuous following - rather intense evasive action - 40 degree turn

CreW observations about Flak: The Red Flack - 13 bursts - coming on

DECLASSIFIED PER EXECUTIVE ORDER 12356, Section 3.3, 74500
By RLB/JAC MABA Date 1/8/91

INTERROGATION FORM

SQUADRON 367 368 (369) 423 A/C Number 086 Letter J. Date 29 May 43

Bomb Load 7x 1000 H.E. Incendi.

Position in Formation

Time Took Off 1342 Time Landed 1918

	X	X	X	X
X	X	X	X	X
X	X	(X)	X	X
X	X	X	X	X
X				X

1. HOT NEWS to be phoned in? Yes No
Details:

CREW: Give Rank and Initials

1- D17 over target - Right wing off
Nav. Times flash - 1707 1/2
Friendly A/C in any kind of distress?
(Give position, time, altitude, full details)

Muresh - Pilot

Bettinger CO-P

1 B17 - 9 chutes + 4 smoking -
1731 -

2nd Lt J.C. Brown - Nav.

Gineovich - Bomb.

1 B17 - over French Coast 1742 Ragde. Pierre
turned back inland - BIG FLASH and
→ 2. TARGET ATTACKED: BLEW UP. No chutes -

1st Lt H.F. Righthown Radio

1st Lt B. Gordon Top T.

Primary Time: 1707 Fighters

S/S PW Pappas - Ball T. 17038246

Alternate Height: 25000-

S/C.B. Smith L. Waist

Last Resort Heading: 270°
(circle)

S/S H.K. Fowler L. Waist

Duration Bomb Run: 30-

1st Lt T.A. Rosato Tail G.

Ind. Sighting

3. Number of BOMBS dropped on target: 2x 1000- Jettisoned: Returned: Abortive:

4. Observed RESULTS OF BOOMBING: (For this plane or others)

Own Bombs: Good Bombing. Some hits on
aiming point. Some over pens.

Other Bombing:

50 in nose prevents seeing own bombs.

5. Any PHOTOGRAPHS taken: Yes? No?

6. GROUND TARGETS ATTACKED BY GUNFIRE AND RESULTS:

7. ROUTE (If different than ordered) (If ABORTIVE give time, place, height of turn; reason for returning early; and disposition of bombs.)

OK - on way back flew over Fla area unnecessarily

8. WEATHER: (If it affected mission)

9. FLAK: Encountered on way out, at target and on way home.

Time	Place	Height of A/C	Type (Height, color, nature or other)	Color of Bombs	Location of Bombs in relation to A/C	Accuracy
------	-------	---------------	---------------------------------------	----------------	--------------------------------------	----------

Crossing Coast Going In - 6 big Red Flack - 1636

→ Target - 1705 Very good for altitude - Flack boats. Moderate. La Croisik - SW west - 1712 little flack

Pontivy - 1721 - NONE although plotted

1737 2 bursts - before coast

1742 - " " - 1 burst - La Guisard

DECLASSIFIED PER EXECUTIVE ORDER 12356, Section 3.3, 74500
By RLB/JAC MABA Date 1/8/91

INTERROGATION FORM

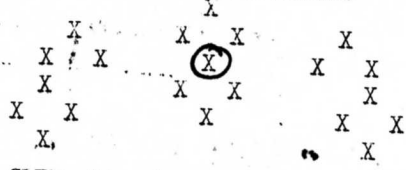
5

SQUADRON 367 368 369 423 A/C Number 894 Letter Date 29 May

Bomb Load 2x2000 H.E. Incendi

Position in Formation

Time Took Off 1340 Time Landed



1. HOT NEWS to be phoned in? Yes No

Details:

CREW: Give Rank and Initials

Friendly A/C in any kind of distress? (Give position, time, altitude, full details)

- Capt. O'hara Pilot
- L.R. Robinson CO-P
- J.D. Bennett Nav.
- J.J. Kostal Bomb.
- W.H. Mountain Radio
- C.A. Sheffield Top T.
- P. Fetkew Ball T.
- M.S. Nelson R. Waist
- J.F. Garris L. Waist
- H.J. Strom Tail G.

See other

2. TARGET ATTACKED:

Primary Time: 1707
 Alternate Height: 24500'
 Last Resort Heading: 280°
 (circle)
 Duration Bomb Run: 40"

3. Number of BOMBS dropped on target: Jettisoned: Returned: Abortive:

4. Observed RESULTS OF BOMBING: (For this plane or others)

Own Bombs:

Ought to have been good.

Other Bombing:

Some hits on target and in immediate area many in water

5. Any PHOTOGRAPHS taken: Yes? No?

6. GROUND TARGETS ATTACKED BY GUNFIRE AND RESULTS:

7. ROUTE (If different than ordered) (If ABORTIVE give time, place, height of turn; reason for returning early, and disposition of bombs.)

About as ordered

8. WEATHER: (If it affected mission)

Was good.

9. FLAK: Encountered on way out, at target and on way home.

Time	Place	Height of A/C	Type (Mag, or release or other)	Direction	Color of Bursts	Location of Bursts in relation to A/C	Accuracy
------	-------	---------------	---------------------------------	-----------	-----------------	---------------------------------------	----------

Looked like predicted barrage over target inaccurate on this group. but 92 was catching hell

Some ineffective bursts off Guernsey - Red burst

Crew observations about Flak:

DECLASSIFIED PER EXECUTIVE ORDER 12356, Section 3.3, 74500 BY RIB/BAC NARA Date 1/8/99

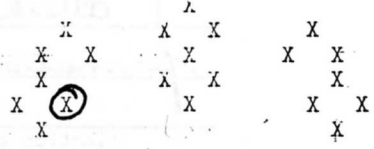
6

SQUADRON 367 368 369 425 A/C Number 978 Letter _____ Date 29 May

Bomb Load 2x2000 H.E. Incend.

Position in Formation

Time Took Off 1340 Time Landed _____



1. HOT NEWS to be phoned in? Yes No
Details:

CREW: Give Rank and Initials

Friendly A/C in any kind of distress?
(Give position, time, altitude, full details)

1 B 17 over target - wing off.
1 B 17 after target - 10 min.
1 B 17 just before coast
9 chutes

- Schoolfield Pilot
- W.A. Price CO-P
- J.B. Mazanek Nav.
- J.A. Kelly Bomb.
- Sgt. V.B. Stevens Radio
- J.C. Stone Top T.
- B.A. Hardy Ball T.
- H.H. Funn R. Waist
- R.D. Conley CONLEY L. Waist
- R.D. Daly Tail G.

2. TARGET ATTACKED:

Primary Time: 1709.

Alternate Height: 24600'

Last Resort Heading: 252°
(circle)

Duration Bomb Run:
40" run.

3. Number of BOMBS dropped on target: Jettisoned: Returned: Abortive:

4. Observed RESULTS OF BOMBING (for this plane or others)

Own Bombs:
No.

Other bombing:
Some a little short - 2 hits on target, some in basin - and burst in town.

5. Any PHOTOGRAPHS taken: Yes?

6. CROWD DAMAGE INFLECTED BY CANNON AND RESULTS:

7. HOMES (if different than ordered) (if NEGATIVE give time, place, height of town; reason for returning early, and disposition of bombs.)

As ordered.

8. WEATHER: (if it affected mission)
Good.

9. FLAG: Encountered on way out, at target and on way home.

Time	Place	Notes	Color	Location	Accuracy
------	-------	-------	-------	----------	----------

hooked like barrage and accurate on groups following - 10 red balls of flak off to right.
Inaccurate for range on this ship accurate as to alt.
Mild coast action

10. ENEMY FIGHTER OPERATIONS:

10 FW. Seen crossing coast - No attacks
(Estimated total number of E/A seen) (Types)

(Location and length of fight)

1 attack - mild and went under after formation behind.

(Tactics of E/A)

(Color, markings, etc. of E/A)

(Our defensive action)

CLAIMS	
DESTROYED	<u>No claims.</u>
PROBABLY	
DAMAGED	
(Fill out immediately separate CLAIM FORM for each claim.)	

11. FIGHTER SUPPORT

On schedule.

12. OBSERVATIONS: Give TIME, PLACE, HEIGHT (List any observations of military importance such as balloons, decoys, dummies, camouflage, smoke screens, enemy signals; activity at airdromes, ports, water-ways, roads, railroad yards; concentrations of vehicles, troops, vessels; landmarks, new enemy installations,

Smoke screen good at front. Not effective over target.

13. INCIDENTS TO FRIENDLY A/C: (If one of our A/C lost, state whether by A.A.; E/A Action, Accident or Undetermined Cause).

14. INJURIES TO CREW: (Give name, position in A/C, type of injury, how received, PLACE and TIME.)

15. DAMAGE TO A/C: (Briefly)

Nil

16. TECHNICAL FAILURES:

2 small flame holes.

17. CREW COMMENTS: (Any unusual incidents? Any suggestions?)

S-2 OFFICER

Wt. [Signature]

FILE COMPLETED

INTERROGATION FORM

SQUADRON 367 368, 369, 423, A/C Number 306 Letter: _____ Date 29 May

Bomb Load 2x2000 H.E. ~~Incendiary~~ Position in Formation (A)

Time Took Off 1340 Time Landed _____

1. HOT NEWS to be phoned in? Yes No

Details: _____

	X	X	X	X
X	X	X	X	X
X		X	X	X
X	X		X	X

CREW: Give Rank and Initials

1 B17 down Lequier - no chute.

Friendly A/C in any kind of distress? (Give position, time, altitude, full details)

Capt. Raper Pilot

1 B17 hit over target - Wing 00 no chute. (2 navigators)

G.R. Brown CO-P

Dexter - Zillery Nav.

1 B17 down at 1732

Coons Bomb.

1 B17 just after target 4 chutes in water.

Syrt. HM. Brown Radio

2. TARGET ATTACKED:

C. Vondracek Top T.

Primary Time: 1707

W.G. Hicks Ball T.

Alternate Height: 25000

W.G. Standish R. Waist

Last Resort Heading: ~~280~~ 280 (circle)

E.E. Kennedy L. Waist

Duration Bomb Run:

Lt. W.J. Jackmeier Tail G.

40" run.

3. Number of BOMBS dropped on target: Jettisoned: Returned: Abortive:

4. Observed RESULTS OF BOMBING: (For this plane or others)

Own Bombs:

No Bombs looked to be right on target.

Other Bombing:

Looked to be short.

5. Any PHOTOGRAPHS taken: Yes? No?

6. GROUND TARGETS ATTACKED BY GUNFIRE AND RESULTS:

7. ROUTE (If different than ordered). (If ABORTIVE give time, place, height of turn; reason for returning early, and disposition of bombs.)

As ordered. Came a bit north of I.P. and then

8. WEATHER: (If it affected mission)

straight over target. 306th was 3rd group over. No evasive action over target.

9. FLAK: Encountered on way out, at target and on way home.

Time	Place	Height of A/C	Type (light, heavy) or moderate or slight	Color of Bursts	Location of Bursts in relation to A/C	Accuracy
------	-------	---------------	---	-----------------	---------------------------------------	----------

Looked like barrage fire off to right bursting on level, below and above. Was inaccurate for deflection but quite accurate for altitude.

Crew observations about flak:

Black bursts. Flashed red when exploding.

DECLASSIFIED PER EXECUTIVE ORDER 12356, Section 3.3, 74500 BY RLB/BAC NARA Date 1/18/91

①

DECLASSIFIED PER EXECUTIVE ORDER 12356, Section 3.3, 745005
BY RLB/JAC MABA Date 1/8/91

10. ENEMY FIGHTER OPPOSITION:

About 15 F.W.'s at French coast going in
(Estimated total number of E/A seen) (Type)
never made an attack on this group but
went on to following ~~etc~~ groups
(Location and length of fight)

1 attack at 12 o'clock Cause of attack
immediately

(Tactics of E/A)

(Color, markings, etc. of E/A)

(Our defensive action)

C L A I M S	
DESTROYED	No Claims
PROBABLY	
DAMAGED	
(Fill out immediately separate CLAIM FORM for each claim.)	

11. FIGHTER SUPPORT

Seen on schedule near coast

12. OBSERVATIONS: Give TIME, PLACE, HEIGHT (List any observations of military importance such as balloons, decoys, dummies, camouflage, smoke screens, enemy signals; activity at airdromes, ports, water-ways, roads, railroad yards; concentrations of vehicles, troops, vessels; landmarks, new enemy installations,
Smoke screens good at Rouen but not effective at Magaine

13. INCIDENTS TO FRIENDLY A/C: (If one of our A/C lost, state whether by A.A., E/A Action, Accident or Undetermined Cause).
over

14. INJURIES TO CREW: (Give name, position in A/C, type of injury, how received, PLACE and TIME.)
No

15. DAMAGE TO A/C: (Briefly)
No

16. TECHNICAL FAILURES:

17. CREW COMMENTS: (Any unusual incidents? Any suggestions?)

Good mission
Weak

S-2 OFFICER

Looks to be some important installations across water from target.

INTERROGATION FORM

SQUADRON 367 368 369 (423) A/C Number 167 Letter V Date 29/5/43

Bomb Load 2/2000 H.E. Incendi.

Position in Formation

Time Took Off 1344 Time Landed 1920

X	X	X	X
X	X	X	X
X	X	X	X
X	X	X	X
X	X	X	X

1. HOT NEWS to be phoned in? Yes No

Details:

CREW: Give Rank and Initials

Friendly A/C in any kind of distress? (Give position, time, altitude, full details)

Lt. R.D. KENEY Pilot

" F.N. KACKSTEDER

" E.F. DORNBERGER

2 B17's -> Summit

plus 1 B17 - hit ground exploded
10 men bailed out - at target.

" D.W. COX Bomb.

" R.B. JONES Radio

2. TARGET ATTACKED:

Primary Time: 1808

" D.W. DAVIS Top T.

Alternate Height: 12000

" D. DeFiorio Ball T.

Last Resort Heading: 250

" W.G. Berthold R. Waist

Duration Bomb Run:

" J. Guiteraez L. Waist

" C.F. Dickenson Tail G.

In drink
40mi.
off coast.

3. Number of BOMBS dropped on target: Jettisoned: 2 Returned: Abortive:

4. Observed RESULTS OF BOMBING: (For this plane or others)

Own Bombs:

Other Bombing:

few very good, some in water

5. Any PHOTOGRAPHS taken: Yes? No?

6. CROWD TARGETS ATTACKED BY GUNFIRE AND RESULTS:

7. ROUTE (if different than ordered) (if ABORTIVE give time, place, height of turn; reason for returning early, and disposition of bombs.)

OK

8. WEATHER: (if it affected mission)

OK

9. FLAK: Encountered on way out, at target and on way home.

Time	Place	Height of A/C	Type, height, color, nature of light	Color of bursts	Location of bursts in relation to A/C	Accuracy
------	-------	---------------	--------------------------------------	-----------------	---------------------------------------	----------

Guernsey 25,000 sht. to mod. black close but low

Target 25,000 mod to int. black one heard

Flak bursts - were firing accuracy good
Kley wret - 1720 - red bursts (none) low mostly level - some hi

Some flak bursts at P. wall (low) some to

DECLASSIFIED PER EXECUTIVE ORDER 12356, Section 3.3, 74500
By RLB/BAC NARA Date 1/8/94

10. ENEMY FIGHTER OPPOSITION:

4 FW190 av Yarnsey - avian 1
1620 # 162: no attacks

4-5

FWA90

(Estimated total number of E/A seen)

(Types)

(1-1747)

no attacks

(Location and length of fight)

(Tactics of E/A)

(Color, markings, etc. of E/A)

(Our defensive action)

C L A I M S	
DESTROYED	<input checked="" type="checkbox"/>
PROBABLY	<input type="checkbox"/>
DAMAGED	<input type="checkbox"/>

(fill out immediately separate CLAIM FORM for each claim.)

11. FIGHTER SUPPORT

OK

12. OBSERVATIONS: Give TIME, PLACE, HEIGHT (List any observations of military importance such as balloons, decoys, dummies, camouflage, smoke screens, enemy signals; activity at airdromes, ports, water-ways, roads, railroad yards; concentrations of vehicles, troops, vessels; landmarks, new enemy installations, orient
18 boats
S. gray 1722
8 boats 1742 Rampoll

orient & target smoke screens
target - poor smoke screen

13. INCIDENTS TO FRIENDLY A/C: (If one of our A/C lost, state whether by A.A., E/A Action, Accident or Undetermined Cause) lot of boat activity at target.

14. INJURIES TO CREW: (Give name, position in A/C, type of injury, how received, PLACE and TIME.)

15. DAMAGE TO A/C: (Briefly)

16. TECHNICAL FAILURES:

Bomb bay doors failed to open

17. CREW COMMENTS: (any/unusual incidents? any suggestions?)
booster(?) red & yellow lights worked well - should

S-2 OFFICER

Skalak

FILE COMPLETED 2010

LAAC

be put in cockpit

DECLASSIFIED PER EXECUTIVE ORDER 12356, Section 3.3, 745005
By RLB/BAC NABA Date 1/8/91

INTERROGATION FORM

SQUADRON 367 368 369 423 A/C Number 741 Letter V Date 29/5/43

Bomb Load 2-2000 H.E. Incendi.

Position in Formation

Time Took Off 1325 Time Landed 1905

			X				X
	X		X	X		X	(Composite)
	X	X		X		X	
	X			X	X	X	
	X	X		X		X	X
	X					X	X

1. HOT NEWS to be phoned in? Yes No
Details:

no.

CREW: Give Rank and Initials

Friendly A/C in any kind of distress?
(Give position, time, altitude, full details)

Groups head saw 17 go down over target - hit by flak, he went down in straight spin. No chance. Lt. Cook later said it exploded see over.

1st Lt J.H. Belser Pilot
2nd Lt W.R. Jones CO-P
2nd Lt G.M. Arnold Nav.
2nd Lt J.T. Harrison Bomb.
T/ Sgt DA Philpott Radio
T/ Sgt E.C. Spangenberg Top T.
S/ Sgt L. Norman Ball T.
S/ Sgt M.E. Mc Daniels R. Waist
T/ Sgt W.L. Utley L. Waist
S/ Sgt W.D. Barton Tail G.

2. TARGET ATTACKED:

Primary Time: 1710
Alternate Height: 25,100
Last Resort Heading: 250°
(circle)
Duration Bomb Run: 50"

3. Number of BOMBS dropped on target: all Jettisoned: Returned: abortive:

4. Observed RESULTS OF BOMBING: (For this plane or others)

Own Bombs: no

Other Bombing: yes, swell from groups ahead but noticed groups blind bombed in channel.

5. Any PHOTOGRAPHS taken: Yes? No? no.

6. GROUND TARGETS ATTACKED BY GUNFIRE AND RESULTS: no.

7. ROUTE (If different than ordered) (If ABORTIVE give time, place, height of turn; reason for returning early, and disposition of bombs.)

As ordered

8. WEATHER: (If it affected mission) Good

9. FLAK: Encountered on way out, at target and on way home.

Time	Place	Height of A/C	Type (light, heavy), intense, moderate or slight.	Color of Bursts	Location of Bursts in relation to A/C	Accuracy
------	-------	---------------	---	-----------------	---------------------------------------	----------

Heavy flak over target. Very accurate. It burst right among our ships. Lasted about a minute. On way out ran into light flak. was evnt.

Crew observations about Flak: saw 8 or 9 red flak bursts from

Hurman or Hanson in way: S. 1 to 1 + 1

DECLASSIFIED PER EXECUTIVE ORDER 12356, Section 3.3, 74500
MABA Date 1/8/94 By RIB/BAC

(9)

SQUADRON 367 368 (369) 423 A/C Number 993 Letter Date 19/5/43

Bomb Load 2x 2000 H.E. Incendi

Position in Formation

Time Took Off _____ Time Landed 1920

(X)	X	X	X
X	X	X	X
X	X	X	X
X	X	X	X
X	X	X	X
X	X	X	X

1. HOT NEWS to be phoned in? Yes (No) Details:

CREW: Give Rank and Initials

B-17 - # chutes out - near Fr. coast on way home at 1733 - friendly A/C in any kind of distress? (Give position, time, altitude, full details)

Capt. J. Magoffin Pilot

M. G. S. Johnson CO-P

Saw - a B-17 - have its wings shot off by flak over target - went straight down - no chutes seen

Nav. - NONE

M. P. J. Travis Bomb.

- B-17 - went at 1748 - went down under fighter attack - N. of Belle Isle.

S/S A. W. Sparks Radio

2. TARGET ATTACKED:

S/S A. H. Hinebaugh Top T.

Primary Time: 1708

S/S P. P. Volasco Ball T.

Alternate Height: 24200'

S/S J. T. Ross R. Waist

Last Resort Heading: 260° (?) (circle)

S/S J. F. Williams L. Waist

Duration Bomb Run: 40 sec

M. J. Littlejohn Tail G.

3. Number of BOMBS dropped on target: 2x 2000 Jettisoned: Returned: Abortive:

4. Observed RESULTS OF BOMBING: (For this plane or others)

Own Bombs: NO

Other Bombing: From our group - seemed good.

5. Any PHOTOGRAPHS taken: (Yes?) No?

6. GROUND TARGETS ATTACKED BY GUNFIRE AND RESULTS: ✓

7. ROUTE (If different than ordered) (If ABORTIVE give time, place, height of turn; reason for returning early, and disposition of bombs.)

As ordered.

8. WEATHER: (If it affected mission) good - as forecast - visibility good - no vapor trails.

9. FLAK: Encountered on way out, at target and on way home.

Time	Place	Height of A/C	Type (light, heavy, moderate or slight)	Color of Bursts	Description of Bursts in relation to A/C	Accuracy
1708	Target	24200'	H.M.	Black	acc-height	

Some flak was in clusters - was rather wide spread.

Crew observations about flak: Red Flak - 10 bursts as we crossed

DECLASSIFIED PER EXECUTIVE ORDER 12356, Section 3.3, 74500 By RLB/BAC Date 1/8/11

90

10. ENEMY FIGHTER OPPOSITION:

20 FW190 - MC109
(Estimated total number of E/A seen) (Types)

One attack on the group ahead -
(Location and length of fight)

✓
(Tactics of E/A)

✓
(Color, markings, etc. of E/A)

✓
(Our defensive action)

<u>C L A I M S</u>	
DESTROYED	<u>✓</u>
PROBABLY	<u>✓</u>
DAMAGED	<u>✓</u>
(Fill out <u>immediately</u> separate CLAIM FORM for each claim.)	

11. FIGHTER SUPPORT met us at coast -
B-40s did not get any action.

12. OBSERVATIONS: Give TIME, PLACE, HEIGHT (List any observations of military importance such as balloons, decoys, dummies, camouflage, smoke screens, enemy signals; activity at airdromes, ports, water-ways, roads, railroad yards; concentrations of vehicles, troops, vessels; landmarks, new enemy installations,

Good smoke screen over horizon,
Poor " " at St Nazaire, -

13. INCIDENTS TO FRIENDLY A/C: (If one of our A/C lost, state whether by A.A., E/A Action, Accident or Undetermined Cause)

14. INJURIES TO CREW: (Give name, position in A/C, type of injury, how received, PLACE and TIME.)

15. DAMAGE TO A/C: (Briefly) 1 Flak hole in stabilizer.

16. TECHNICAL FAILURES: ✓

17. CREW COMMENTS: (any unusual incidents? any suggestions?)

- good show -
J. Owen

S-2 OFFICER

FILE COMPLETED

DECLASSIFIED PER EXECUTIVE ORDER 12356, Section 3.3, 745005
By ALB/BAC NARA Date 1/8/94

DECLASSIFIED BY EXECUTIVE ORDER 12356, Section 3.3, 745-251
BY RUB/JAC MABA Date 1/8/91

(11)

INTERROGATION FORM

SQUADRON 367 368 369 423 A/C Number 554 Letter _____ Date 29/5/4

Bomb Load 2/20.00 (H.E.) Incendi. Position in Formation

Time Took Off 13.42 Time Landed 19.20

1. HOT NEWS to be phoned in? Yes No _____
 Details: _____
- | | | | | |
|--|---|---|---|---|
| | X | X | X | X |
| | X | X | X | X |
| | X | X | X | X |
| | X | X | X | X |

CREW: Give Rank and Initials

Friendly A/C in any kind of distress?
 (Give position, time, altitude, full details)

1st Lt. Ledgerwood Pilot
 E.W. Kensor CO-P
 C.D. Moore Nav.

2. TARGET ATTACKED:

Primary Time: 17.07
 Alternate Height: 24,500
 Last Resort Heading: 225° mag.
 (circle)
 Duration Bomb Run: 30-40 Sec.

S/S J.W. Walkenhorst Top T.
 S/S M. Carney Ball T.
 S/S L.J. Dwyer R. Waist
 S/S W.H. Hiller L. Waist
 S/S W.D. Brittain Tail G.

3. Number of BOMBS dropped on target: 2 Jettisoned: _____ Returned: _____ Abortive: _____

4. Observed RESULTS OF BOMBING: (For this plane or others)

Own Bombs:

Other Bombing:

some in water
 some on either side of target.
 some in drain
 at least 8 bombs right on target.

Clouds covered up on
 smoke. Heavy flak
 coming from just south.

5. Any PHOTOGRAPHS taken: Yes? No?

6. GROUND TARGETS ATTACKED BY GUNFIRE AND RESULTS:

7. ROUTE (If different than ordered) (If ABORTIVE give time, place, height of turn; reason for returning early and disposition of bombs.)
 As ordered except swung out about 3 miles to left between 18 and target.

8. WEATHER: (If it affected mission)

9. FLAK: Encountered on way out, at target and on way home.

Time	Place	Height	Type (light, ...)	Color	Location	Accuracy
------	-------	--------	-------------------	-------	----------	----------

Com route group.

INTERROGATION FORM

SQUADRON 367 (368) 369 423 A/C Number 084 Letter A. Date 5/24/43

Bomb Load 2x2000 H.E. Incendi. Position in Formation

Time Took Off 1315 Time Landed 1910

1. HOT NEWS to be phoned in? Yes No
Details:

	X	X	X	X
X	X	X	X	X
X	X	X	X	X
X	X	X	X	X
X	X	X	X	X

CREW: Give Rank and Initials

Friendly A/C in any kind of distress?
(Give position, time, altitude, full details)

Lt L. G. Cook Pilot

11317 at target - no chutes.
11317 at Chanel - 9 chutes.
1 lagging behind.

Lt G. K. Logue CO-P

Lt A. E. Sumner Nav.

S/Sgt Ametta Bomb.

T/Sgt R. F. Nelson Radio

2. TARGET ATTACKED:

Primary Time: 1710

T/Sgt J. K. Herman Top T.

Alternate Height: 25,000

S/Sgt W. J. Prempin Ball T.

Last Resort Heading: 270
(circle)

S/Sgt R. J. Kennedy R. Waist

Duration Bomb Run:
30"

Sgt M. H. Goss L. Waist

S/Sgt Jennings Tail G.

3. Number of BOMBS dropped on target: all Jettisoned: Returned: abortive:

4. Observed RESULTS OF BOMBING: (For this plane or others)

Own Bombs: not observe.

Other Bombing: not very good: over

5. Any PHOTOGRAPHS taken: Yes? (No?)

6. CROWD TARGETS ATTACKED BY GUNFIRE AND RESULTS:

7. ROUTE (If different than ordered). (If abortive give time, place, height of turn; reason for returning early, and disposition of bombs.)

Generally as ordered

8. WEATHER: (If it affected mission) hazy. good over target.

9. FLAK: Encountered on way out, at target and on way home.

Time	Place	Height	Type / Sight	Color	Location	Accuracy
			burst / dense, moderate or slight	of Bursts	Bursts in relation to A/C	

25,000 heavy, slight black to left - height good, but to left

target 25,000 heavy, moderate, black, accurate.

tracking all the way at target.

Crew observations about Flak: just as accurate, but not as intense as former.

DECLASSIFIED PER EXECUTIVE ORDER 12356, Section 3.3, DATE 1/8/99 BY RLB/BAC

12

74500

DECLASSIFIED BY EXECUTIVE ORDER 12356, Section 3.3, 745-251
By RLB/JAC MABA Date 1/8/91

13

INTERROGATION FORM

SQUADRON 367 368 369 423 A/C Number 794 Letter _____ Date 29/5/4

Bomb Load 2X2000 H.E. Incendi. _____ Position in Formation _____

Time Took Off _____ Time Landed _____ X X X X

1. HOT NEWS to be phoned in? Yes No
Details: X X X X X X X X

CREW: Give Rank and Initials

Friendly A/C in any kind of distress?
(Give position, time, altitude, full details)

Lt. McKearn Pilot
FO BH Brown CO-P
2 Lt. JG Foggart Nav.
2 Lt. R.L. Alexander Bomb.
T/S. E.W. Noden Radio
T/S G.W. Diggs Top T.
Sgt P.G. Peterson Ball T.
S/S E Newhaus R. Waist
S/S L.D. McCoy L. Waist
S/S J.O. Wheeler Tail G.

2. TARGET ATTACKED:

Primary Time: 17.07
Alternate Height: 25000
Last Resort Heading: 278° mag.
(circle)
Duration Bomb Run: 30 Sec.

3. Number of BOMBS dropped on target: 2 Jettisoned: _____ Returned: _____ Abortive: _____

4. Observed RESULTS OF BOMBING: (For this plane or others)

Own Bombs: 1 hit right in mouth.

Other Bombing: quite a few in water. Pumps come from different directions. Some right in front of sheds. Hits from target to Southernmost tip of Basin.

5. Any PHOTOGRAPHS taken: Yes? No?

6. GROUND TARGETS ATTACKED BY GUNFIRE AND RESULTS:

7. ROUTE (If different than ordered) (If ABORTIVE give time, place, height of turn; reason for returning early, and disposition of bombs.)

As ordered except spotted around between 1 P and target. In a circle so that other groups could line up.

8. WEATHER: (If it affected mission) Good.

9. FLAK: Encountered on way out, at target and on way home.

Time Place Height Type Color Location Accuracy

10. ENEMY FIGHTER OPPOSITION:

Saw 6.

(Estimated total number of E/A seen)

(Types)

No fights.

Attacked formation down just before support

(Location and length of fight)

M.E. 109s.

(Tactics of E/A)

(Color, markings, etc. of E/A)

(Our defensive action)

3-5000 ft over target.

C L A I M S

DESTROYED _____

PROBABLY _____

DAMAGED _____

(Fill out immediately separate CLAIM FORM for each claim.)

11. FIGHTER SUPPORT

as scheduled.

12. OBSERVATIONS: Give TIME, PLACE, HEIGHT (List any observations of military importance such as balloons, decoys, dummies, camouflage, smoke screens, enemy signals; activity at airdromes, ports, water-ways, roads, railroad yards; concentrations of vehicles, troops, vessels; landmarks, new enemy installations,

1 B 17 down over target. miss hit by flak.

1 B 17 down on coast on way back 8 minutes seen.

1 B 17 seen in trouble over water. Unknown target + orient. 4 minutes seen (2000 ft)

13. INCIDENTS TO FRIENDLY A/C: (If one of our A/C lost, state whether by A.A., E/A Action, Accident or Undetermined Cause)

14. INJURIES TO CREW: (Give name, position in A/C, type of injury, how received, PLACE and TIME.)

none.

15.

15. DAMAGE TO A/C: (Briefly) *none.*

DECLASSIFIED PER EXECUTIVE ORDER 12356, Section 3.3, 745005
By RLB/JAC MARA Date 1/18/91

INTERROGATION FORM

SQUADRON 367 (368) 369 423 A/C Number 163 Letter _____ Date 29/5/43

Bomb Load 2/2000 H.E. Incendi.

Position in Formation

Time Took Off 1330 Time Landed 1905

		X		X		X
X	X		X	X	(X)	X
X			X	X		X
X	X		X			X
X						X

1. HOT NEWS to be phoned in? Yes No
Details:

CREW: Give Rank and Initials

Friendly A/C in any kind of distress?
(Give position, time, altitude, full details)

LT G.E. PARIS Pilot

2 B17's down - after target " O.S. LINN CO-P

1st after target - flak got " R.L. SLATER Nav.

it first - 7 chutes " S. SILVERSTEIN Bomb.

2nd at coast flak - fighters 1/3 J.E. MILNER Radio

2. TARGET ATTACKED: spun - 8 chutes
Primary Time: 17:10 5/5 A.R. SORWENSON T.

Alternate Height: 25 300' 5/5 G.G. HOLT Ball T.

Last Resort Heading: 247° 1/3 R.L. LONG R. Waist

(circle) Duration Bomb Run: 1/3 K.I. MIGLIORIS Waist

45 sec. 1/3 I. COULSEN Tail G.

3. Number of BOMBS dropped on target: 2 Jettisoned: Returned: Abortive:

4. Observed RESULTS OF BOMBING: (For this plane or others)

Own Bombs: In target area

Other Bombing: mostly in target - some in water

5. Any PHOTOGRAPHS taken: Yes? No? (No?)

6. GROUND TARGETS ATTACKED BY GUNFIRE AND RESULTS:

7. ROUTE (If different than ordered) (If ABORTIVE give time, place, height of turn; reason for returning early, and disposition of bombs.)

OK

8. WEATHER: (If it affected mission)

9. FLAK: Encountered on way out, at target and on way home. OK - d m cold

Time	Place	Height of A/C	Type (light, heavy), intense, moderate or slight.	Color of Bursts	Location of Bursts in relation to A/C	Accuracy
------	-------	---------------	---	-----------------	---------------------------------------	----------

	Gurnsey	25,000	slt.	black	not firing at this group.	poor this A/C
--	---------	--------	------	-------	---------------------------	---------------

	Target		slt.	black	very accurate	
--	--------	--	------	-------	---------------	--

Crew observations about Flak:

red bursts not coming in about 15 holes

11: 11

DECLASSIFIED PER EXECUTIVE ORDER 12356, Section 3.3, 74500
By RLB/BAC MABA Date 1/8/91

DECLASSIFIED PER EXECUTIVE ORDER 12356, Section 3.3, 74500
By RLB/BAC MARA Date 1/8/91

15

INTERROGATION FORM

SQUADRON 367 (368) (369) 423 A/C Number 502 Letter _____ Date 5/29/43

Bomb Load 2 X 2000 H.E. Incendi
Time Took Off 13:25 Time Landed 1900

Position in Formation

	X	X	X	X	X
X	X	X	X	X	X
X	X	X	X	X	X
X	X	X	X	X	X
X	X	X	X	X	X
X	X	X	X	X	X

1. HOT NEWS to be phoned in? Yes No
Details:

CREW: Give Rank and Initials

Friendly A/C in any kind of distress?
(Give position, time, altitude, full details)

HENNESSY Pilot
 Lt. McIntire CO-P
 2nd Lt. J. M. Levy Nav.
 2nd Lt. J. Ryan Bomb.
 T/S Griggs Radio
 T/S B. H. Drennan Top T.
 S/S J. F. Elek Ball T.
 S/S P. J. Spellman R. Waist
 S/S R. G. Adams L. Waist
 S/S L. J. Cronnelly Tail G.

2. TARGET ATTACKED:

Primary Time: 17.09
 Alternate Height: 25,300
 Last Resort Heading: 265° m.
 (circle)
 Duration Bomb Run: 60 seconds at least.

3. Number of BOMBS dropped on target: 2 Jettisoned: Returned: Abortive:

4. Observed RESULTS OF BOMBING: (For this plane or others)

Own Bombs:
Other Bombing: General Good. Griggs almost looked hell out of it.

5. Any PHOTOGRAPHS taken: Yes? No? (No)

6. GROUND TARGETS ATTACKED BY GUNFIRE AND RESULTS: none

7. ROUTE (If different than ordered) (If ABORTIVE give time, place, height of turn; reason for returning early, and disposition of bombs.)
As briefed. Except closer to shore on turn than planned.

8. WEATHER: (If it affected mission) Beautiful over France

9. FLAK: Encountered on way out, at target and on way home.

Time	Place	Height or A/C	Type (light, heavy) Intense, moderate or slight	Color or Bursts	Description Bursts in relation to A/C	Accuracy
------	-------	---------------	---	-----------------	---------------------------------------	----------

17.09 Target 25300 Moderate, about 3 positions firing. Looked like aimed flak. 1 flak hit at target.
 Ten puffs of red flak at about 10 miles off. Later 3 more bursts at same place seemed to be in a line.
 Crew observations about flak: Chiving the mowed grass out

10. ENEMY FIGHTER OPPOSITION:

Saw four or 5 S/E fighters on ground below on leaving target -
(Estimated total number of E/A seen) (Types)

Saw a few E/A on way in and out crossing French Coast.
(Location and length of flight)

too far away
(Tactics of E/A)

(Color, markings, etc. of E/A)

(Our defensive action)

CLAIMS	
DESTROYED	_____
PROBABLY	<u>None</u>
DAMAGED	_____

(Fill out immediately separate CLAIM FORM for each claim.)

11. FIGHTER SUPPORT

Met about ten minutes after crossing coast on way home.

12. OBSERVATIONS: Give TIME, PLACE, HEIGHT (List any observations of military importance such as balloons, decoys, dummies, camouflage, smoke screens, enemy signals; activity at airdromes, ports, water-ways, roads, railroad yards; concentrations of vehicles, troops, vessels; landmarks, new enemy installations,

13. INCIDENTS TO FRIENDLY A/C: (If one of our A/C lost, state whether by A.A., E/A Action, Accident or Undetermined Cause)

14. INJURIES TO CREW: (Give name, position in A/C, type of injury, how received, PLACE and TIME.)

none

15. DAMAGE TO A/C: (Briefly)

16. TECHNICAL FAILURES:

Hydraulic system shot up
holes in wing and gas tank
two superchargers out.

17. CREW COMMENTS: (Any unusual incidents? Any suggestions?)

S-2 OFFICER Capt W O Glass TIME COMPLETED _____

DECLASSIFIED PER EXECUTIVE ORDER 12356, Section 3.3, 745005
By RLB/BAC MARA Date 1/8/94

INTERROGATION FORM

SQUADRON 367 368 369 423 - A/C Number 163 Letter _____ Date 29/5/43

Bomb Load 2/2000 H.E. Incendi.

Position in Formation

Time Took Off 1330 Time Landed 1905

		X		X		X
X	X		X	X	<u>(X)</u>	X
X			X	X		X
X	X		X			X
X						X

1. HOT NEWS to be phoned in? Yes No
Details:

CREW: Give Rank and Initials

Friendly A/C in any kind of distress?
(Give position, time, altitude, full details)

LT G.E. PARIS Pilot

2 B17's down - after target " O.S. LINN CO-P
1st after target - flak got " R.L. SLATER Nav.
it first - 7 chutes " S. SILVERSTEIN Bomb.
2nd at coast flak - fighters " J.E. MILNER Radio

2. TARGET ATTACKED: spin - 8 chutes

Primary Time: 17:10

5/S A.R. SORWENSON T.

Alternate Height: 25 300'

5/S G.G. HOLT Ball T.

Last Resort Heading: 247°
(circle)

1/S R.L. LONG R. Waist

Duration Bomb Run:

1/S K.I. MIGLIORIS Waist

45 sec.

5/S I. COULSEN Tail G.

3. Number of BOMBS dropped on target: 2 Jettisoned: Returned: Abortive:

4. Observed RESULTS OF BOMBING: (For this plane or others)

Own Bombs:

In target area

Other Bombing:

mostly in target - some in water

5. Any PHOTOGRAPHS taken: Yes? (No)

6. GROUND TARGETS ATTACKED BY GUNFIRE AND RESULTS:

7. ROUTE (If different than ordered) (If ABORTIVE give time, place, height of turn; reason for returning early, and disposition of bombs.)

OK

8. WEATHER: (If it affected mission)

9. FLAK: Encountered on way out, at target and on way home.

OK - down cold

Time	Place	Height of A/C	Type (light, heavy), intense, moderate or slight.	Color of Bursts	Location Bursts in relation to A/C	Accuracy
------	-------	---------------	---	-----------------	------------------------------------	----------

	<u>Churnsey</u>	<u>25,000</u>	<u>slt.</u>	<u>black</u>	<u>not firing at this group.</u>	<u>poor this A/C</u>
--	-----------------	---------------	-------------	--------------	----------------------------------	----------------------

	<u>Target</u>		<u>slt.</u>	<u>black</u>	<u>very accurate</u>	
--	---------------	--	-------------	--------------	----------------------	--

Crew observations about Flak:

red bursts not common about 15 holes
all at

DECLASSIFIED PER EXECUTIVE ORDER 12356, Section 3.3, 74500
By RIB/BAC NARA Date 1/8/91

DECLASSIFIED PER EXECUTIVE ORDER 12356, Section 3.3, 74500
By RLB/JAC NARA Date 1/8/91

15

INTERROGATION FORM

SQUADRON 367 (368) (369) 423 A/C Number 502 Letter _____ Date 5/29/43

Bomb Load 2 X 2000 H.E. Incendi
Time Took Off 13:25 Time Landed 19:00

Position in Formation

	X				X
X	X	X	X	X	X
X		X	X		X
X	X		X		X
					X

1. HOT NEWS to be phoned in? Yes No
Details:

CREW: Give Rank and Initials

Friendly A/C in any kind of distress?
(Give position, time, altitude, full details)
HENNESSY Pilot

2nd Lt. McINTIRE CO-P

2nd Lt. J. M. Levy Nav.

2nd Lt. J. Ryan Bomb.

T/S Griggs Radio

T/S B.H. Drennan Top T.

2. TARGET ATTACKED:

Primary Time: 17.09 S/S J F Clek Ball T.
 Alternate Height: 25,300 S/S P.J. Spellman R. Waist
 Last Resort Heading: 265° m. S/S R G Adams L. Waist
 Duration Bomb Run: 60 seconds at least. S/S L.J. Cavanaugh Tail G.

3. Number of BOMBS dropped on target: 2 Jettisoned: _____ Returned: _____ Abortive: _____

4. Observed RESULTS OF BOMBING: (For this plane or others)

Own Bombs:

Other Bombing: General Good. Griggs almost looked hell out of it.

5. Any PHOTOGRAPHS taken: Yes? No? No?

6. GROUND TARGETS ATTACKED BY GUNFIRE AND RESULTS: none

7. ROUTE (If different than ordered) (If ABORTIVE give time, place, height of turn; reason for returning early, and disposition of bombs.)
As briefed. Except closer to shore on turn than planned.

8. WEATHER: (If it affected mission) Beautiful over home

9. FLAK: Encountered on way out, at target and on way home.

Time	Place	Height or A/C	Type (light, heavy) intense, moderate or slight	Color of Bursts	Location of Bursts in relation to A/C	Accuracy
------	-------	---------------	---	-----------------	---------------------------------------	----------

17.09 Target 25300 Moderate, about 3 positions firing. Looked like aimed flak. 1 flak hit at target

Two puffs of red flak at crest on way in 10 miles off. Later 2 more bursts at same place. Crew observations about flak: Chiving the moved guns out

DECLASSIFIED PER EXECUTIVE ORDER 12356, Section 3.3, 74500

By RLB/BAC

MARA

Date 1/8/94

16

INTERROGATION FORM

SQUADRON 367 368 369 423 A/C Number 777 Letter 79 Date 5/43

Bomb Load 2x 2000 H.E. Incend. Position in Formation
Time Took Off Time Landed

- 1. HOT NEWS to be phoned in? Yes... No

One B17 Group behind on fire went down in spin 7 chutes came out half way from coast to target on way back.

One B17 hit by flak just before target did good bombing attack on target and hit it down smoking and hit ground 7 chutes came out

Friendly A/C in any kind of distress? (Give position, time, altitude, full details)

CREW: Give Rank and Initials

- Pilot: Lt. E. Hopkins
- CO-P: Lt. H. K. Phillips
- Nav.: Lt. L. S. Pierce
- Bomb.: 2nd Lt. E. Saunders
- Radio: 1st Lt. W. H. McGivney
- Top T.: 1st Lt. T. F. Micheli
- Ball T.: 1st Lt. C. Shelley
- R. Waist: 1st Lt. O. VanCleave
- L. Waist: 1st Lt. R. L. Taylor
- Tail G.: 1st Lt. E. C. Westloch

2. TARGET ATTACKED:

Primary Time: 1707
Alternate Height: 25,000
Last Resort Heading: See West
Duration Bomb Run: 40 seconds

- 3. Number of BOMBS dropped on target: all
- 4. Observed RESULTS OF BOMBING: (For this plane or others)

Other Bombing: Among first on target could not see

- 5. Any PHOTOGRAPHS taken: Yes? No?
- 6. CROWD TARGETS ATTACKED BY GUNFIRE AND RESULTS:
- 7. ROUTE (If different than ordered) (If abortive give time, place, height of turn; reason for returning early, and disposition of bombs.)

Easy turn into target

8. WEATHER: (If it affected mission) Clear

9. FLAK: Encountered on way out, at target and on way home.

Time	Place	Height	Type	Color	Location	Accuracy
------	-------	--------	------	-------	----------	----------

Target. 1707 heavy intense accurate ast. altitude and direction following fire

Crew observations about flak:

10. ENEMY FIGHTER OPPOSITION:

Saw four or 5 E/A fighters on ground below on leaving target
(Estimated total number of E/A seen) (Types)

Saw a few E/A on way in and out crossing French Coast.
(Location and length of flight)

too far away
(Tactics of E/A)

(Color, markings, etc. of E/A)

(Our defensive action)

C L A I M S	
DESTROYED	_____
PROBABLY	<u>none</u>
DAMAGED	_____
(Fill out immediately separate CLAIM FORM for each claim.)	

11. FIGHTER SUPPORT met about ten minutes after crossing coast on way home.

12. OBSERVATIONS: Give TIME, PLACE, HEIGHT (List any observations of military importance such as balloons, decoys, dummies, camouflage, smoke screens, enemy signals; activity at airdromes, ports, water-ways, roads, railroad yards; concentrations of vehicles, troops, vessels; landmarks, new enemy installations,

13. INCIDENTS TO FRIENDLY A/C: (If one of our A/C lost, state whether by A.A., E/A Action, Accident or Undetermined Cause)

14. INJURIES TO CREW: (Give name, position in A/C, type of injury, how received, PLACE and TIME.)

none

15. DAMAGE TO A/C: (Briefly)

16. TECHNICAL FAILURES:

hydraulic system shot up
holes in wing and gas tank
two superchargers out.

17. CREW COMMENTS: (Any unusual incidents? Any suggestions?)

S-2 OFFICER Capt W O Glass TIME COMPLETED _____

DECLASSIFIED PER EXECUTIVE ORDER 12356, Section 3.3, 745005
BY RIB/JAC NARA Date 1/18/91

17

INTERROGATION FORM

SQUADRON 367 (368, 369, 423) A/C. Number 823 Letter 4 Date 29-Mg-1943

Bomb Load 2 X 1000 H.E. Incendi. Position in Formation

Time Took Off 1325 Time Landed 1415

1. HOT NEWS to be phoned in? Yes No
Details:

	X	X	X	X
X	X	X	X	X
X		X	X	X
X	X	X	X	X
X				X

CREW: Give Rank and Initials

Friendly A/C in any kind of distress?
(Give position, time, altitude, full details)

Capt Robert Pilot

Lt W. J. Dooley CO-P

Lt L. Bergen Nav.

Lt A. Winters Bomb.

Sgt W. C. Ormond Radio

Sgt G. A. Christian Top T.

Sgt Kemberling Ball T.

Sgt Lemmerhirt R. Waist

Sgt Pooland L. Waist

Sgt Kravick Tail G.

Lt Weld Abortive:

2. TARGET ATTACKED:

Primary ✓ Time: 1709

Alternate Height: 25,500

Last Resort Heading: 265
(circle)

Duration Bomb Run:

60"

3. Number of BOMBS dropped on target: all Jettisoned: Returned: Abortive:

4. Observed RESULTS OF BOMBING: (For this plane or others)

Own Bombs: to the right

Other Bombing: pretty good.

5. Any PHOTOGRAPHS taken: Yes? No?

6. GROUND TARGETS ATTACKED BY GUNFIRE AND RESULTS:

7. ROUTE (If different than ordered) (If ABORTIVE give time, place, height of turn; reason for returning early, and disposition of bombs.)

as ordered. left turn, wide at target

8. WEATHER: (If it affected mission) high haze at English coast, but good at target

9. FLAK: Encountered on way out, at target and on way home.

Time	Place	Height or A/C	Type (light, heavy), Intense, moderate or slight	Color of Bursts	Location Bursts in re- lation to A/C	Accuracy
------	-------	---------------------	---	-----------------------	--	----------

(1) in Guansa, 25,000, heavy moderate black left left not too good

(2) target - heavy, moderate, concentrated, accurate, barrage & track on all sides & above

Crew observations about flak: Lighter than formerly, but accurate

DECLASSIFIED PER EXECUTIVE ORDER 12356, Section 3.3, 74500
By RLB/JAC Date 1/18/99 NARA

18

INTERROGATION FORM

SQUADRON 367 368 369 423 A/C Number 4629 Letter Date May 29

Bomb Load 2x2000 H.E. Incend. Position in Formation

Time Took Off 13:40 Time Landed 19:15
X X X X
X X X X
X X X X
X X X X
X X X X

1. HOT NEWS to be phoned in? Yes No

Details:

CREW: Give Rank and Initials

Friendly A/C in any kind of distress? (Give position, time, altitude, full details)

1st E.G. Hanes Pilot
1st D.R. Winters CO-P
9 chutes

2nd G.F. Meltzer Nav.
2nd L.B. Iruin Bomb.

3rd O.B. Schulz Radio
from B-17 betw. T. & Island
B-17 disappeared

TARGET ATTACKED: 17:07
Primary Time: 16:07
T/S R.E. Moore Top-T.

Alternate Height: 24500 Sgt. T.W. Nichols Ball T.

Last Resort Heading: 250 Major H.J. Schmidt Waist

(circle)
Duration Bomb Run: 30"
S/S M.J. Komo L. Waist
S/S R. Peterson Tail G.

3. Number of BOMBS dropped on target: 2x2000 Jettisoned: Returned: Abortive:

4. Observed RESULTS OF BOMBING: (For this plane or others)

Own Bombs:

Pretty well on T. perhaps

Other Bombing: chiefly N. of aiming point

5. Any PHOTOGRAPHS taken: No

6. GROUND TARGETS ATTACKED BY CONFIRE AND RESULTS:

7. ROUTE (If different than ordered) (If ABORTIVE give time, place, height of turn; reason for returning early, and disposition of bombs.)

As planned

8. WEATHER: (If it affected mission)

Good

9. FLAK: Encountered on way out, at target and on way home.

Table with columns: Time, Place, Height of A/C, Type (light, moderate or slight), Brightness, Color of Bursts, Location, Accuracy

T. Mod. Some acc. - some scattered as to height and level

Crew observations about Flak: Definitely Reduced

DECLASSIFIED PER EXECUTIVE ORDER 12356, Section 3.3, 745005

By RLB/BAC NARA Date 1/8/99

INTERROGATION FORM

19

SQUADRON 367 368 369 423 A/C Number 957 Letter M Date 29/5/43

Bomb Load 2/2000 H.E. Incendi.

Position in Formation

Time Took Off 1341 Time Landed 1920

		X		X		X
	X	X		X		X
	X		X	X		X
	X	X		X		X
	X					X

1. HOT NEWS to be phoned in? Yes No
Details:

CREW: Give Rank and Initials

Friendly A/C in any kind of distress?
(Give position, time, altitude, full details.)

Same

LT. D. FUHRMEISTER Pilot

" E. O. RASMUSSEN CO-P

" A. F. TITUS Nav.

" E. GAST Bomb.

1/3 R. P. LITTLE Radio

1/3 V. A. STRUCKHOFF Top T.

1/3 W. R. CLARK Ball T.

3/3 G. TONEY R. Waist

1/3 K. E. MOLANDER Waist

1/3 H. B. GOLDBERG Tail G.

2. TARGET ATTACKED:

Primary Time: 1706

Alternate Height: 25000

Last Resort Heading: 287
(circle)

Duration Bomb Run: 40sec

3. Number of BOMBS dropped on target: 2 Jettisoned: Returned: Abortive:

4. Observed RESULTS OF BOOMBING: (For this plane or others)

Own Bombs:

Other Bombing: looked good

5. Any PHOTOGRAPHS taken: Yes? No?

6. GROUND TARGETS ATTACKED BY GUNFIRE AND RESULTS:

7. ROUTE (If different than ordered) (If ABORTIVE give time, place, height of turn; reason for returning early, and disposition of bombs.)

OK

8. WEATHER: (If it affected mission)

OK

9. FLAK: Encountered on way out, at target and on way home.

Time	Place	Height or A/C	Type (light, heavy) intense, moderate or slight	Color of Bursts	Location Bursts in re- lation to A/C	Accuracy
------	-------	---------------------	--	-----------------------	--	----------

Jurnsey 25000 mod. (25 bursts) reddish low & brown behind

Target. 25000 mod. lit. good - acc. poor

Crew observations about Flak:

Flak bursts Jurnsey. none

formation well around

DECLASSIFIED PER EXECUTIVE ORDER 12356, Section 3.3, 74500
BY RIB/BAC NARA Date 1/8/91

DECLASSIFIED PER EXECUTIVE ORDER 12356, Section 3.3, BY RLB/BAC NARA Date 1/8/99

74500

20

INTERROGATION FORM

SQUADRON 367 368 369 (423) A/C Number 172 Letter _____ Date 29/5/43

Bomb Load JX 2000 H.E. Incendi. _____ Position in Formation _____

Time Took Off 1330 Time Landed 1930

1. HOT NEWS to be phoned in? Yes No _____

Details: water
 B-17 - went in ~~flame~~ - N.W. of Bell Is. -
 at 1719 - 5 chutes - appeared to be caused
 from Fleak over target
 (Give position, time, altitude, full
 B-17 - ~~det 1734~~ in spin - between
horint and Plouay - hit ground
 + burst into flames - 9 chutes
 B-17 went 1739 near Plouay - 4 chutes
 was under fighter attack
 Lt Jones launched at another field in leg

				X
X	X	X	X	X
X	X	X	X	X
X	X	X	X	X
X	X	X	X	X

CREW: Give Rank and Initials

Capt P.J. Check Pilot
Lt. W.P. Cassidy CO-P
Lt. M.P. Blanchette Nav.
W.E.W. Forel Bomb.
T/S. W.T. Johnson Radio
T/S. J.A. Bobbell Top T.
T/S. W.S. Beeby Ball T.
T/S. W.V. Baker R. Waist
Sgt. A.H. Garrett L. Waist
T/S. M.P. Edwards Tail G.
Lt. D.T. Kennedy - Co-Pilot

2. TARGET ATTACKED:
 Primary Time: 1707
 Alternate Height: 24500'
 Last Resort Heading: 290 mag.
 (circle)
 Duration Bomb Run: 15 sec.

Individual signs - as the rest were
not on target

3. Number of BOMBS dropped on target: 2x 2000 Jettisoned: _____ Returned: _____ Abortive: _____

4. Observed RESULTS OF BOMBING: (For this plane or others)

Own Bombs: ? Target was hit by our formation.

Other Bombing: Seemed to be on the target.

5. Any PHOTOGRAPHS taken: Yes? No?

6. GROUND TARGETS ATTACKED BY GUNFIRE AND RESULTS:

7. ROUTE (If different than ordered) (If ABORTIVE give time, place, height of turn; reason for returning early, and disposition of bombs.)

As ordered -
Turn slight left - then right - sharp.

8. WEATHER: (If it affected mission) Visibility good.

9. FLAK: Encountered (no vapor trails) on way out, at target and on way home.

Time	Place	Height of A/C	Type (light, heavy, moderate or slight)	Color of Bursts	Direction of Bursts in relation to A/C	Accuracy
------	-------	---------------	---	-----------------	--	----------

1620	Queney	25000	H-M.	Black	Shooting at ground to left rear of us	
1653	Near I.P.	15000	H-M.	Black	from a two gun battery - continue following	
1707	Target	24500	H-I	Black	aimed + maybe predicted	

Crew observations about flak: "Barrage" - at target - puff's same place
time after time,

10. ENEMY FIGHTER OPPOSITION:

20 FW190's
(Estimated total number of E/A seen) (Types)

They did not attack us.
(Location and length of fight)

Seemed to be waiting for stragglers.

(Tactics of E/A)

(Color, markings, etc. of E/A)

Whole Unit against Fldr.
(Our defensive action)

<u>C L A I M S</u>	
DESTROYED	<u>17, 1</u>
PROBABLY	
DAMAGED	

(fill out immediately separate CLAIM FORM for each claim.)

11. FIGHTER SUPPORT O.K. - we were early.

Square red - 80 ft - tall from plane near British camp.

12. OBSERVATIONS: Give TIME, PLACE, HEIGHT (List any observations of military importance such as balloons, decoys, dummies, camouflage, smoke screens, enemy signals; activity at airdromes, ports, water-ways, roads, railroad yards; concentrations of vehicles, troops, vessels; landmarks, new enemy installations,

Balloons NOT target -
Smoke screens at hour of at target - the latter
ineffective - came from boats.

13. INCIDENTS TO FRIENDLY A/C: (If one of our A/C lost, state whether by A.A., E/A Action, Accident or Undetermined Cause)

14. INJURIES TO CREW: (Give name, position in A/C, type of injury, how received, PLACE and TIME.)

15. DAMAGE TO A/C: (Briefly)

16. TECHNICAL FAILURES:

#4 Super charger out.

17. CREW COMMENTS: (Any unusual incidents? Any suggestions?)

Poor formation.

S-2 OFFICER

J. Owen

FILE COMPLETED

DECLASSIFIED PER EXECUTIVE ORDER 12356, Section 3.3, 745005

By RIB/BAC NARA Date 1/8/91

INTERROGATION FORM

29/5/43

SQUADRON 367 368 369 423 A/C Number 426 Letter _____ Date _____

Bomb Load 2x 2000 H.E. Incendi. Position in Formation

Time Took Off 1340 Time Landed 1913

1. HOT NEWS to be phoned in? Yes No

Details:

① B17 over target flak blew right wing off from 4 engine on no chutes out.

	X	X	X	X
X	X	X	X	X
X	X	X	X	X
X	X	X	X	X
X	X	X	X	X

CREW: Give Rank and Initials

Friendly A/C in any kind of distress? (Give position, time, altitude, full details)

Pt W. Wedge Pilot

② B17 just after bombing shot down by enemy fighters went down in water & chutes out

Pt Bryant CO-P

③ B17 strafed from group behind attack by fighters about 5 minutes after target was broken off & chutes out

Pt. Coeds Nav.

Pt. Lindsay Bomb.

Pt Sgt Billy Brown Radio

TARGET ATTACKED:

Primary Time: 1707 Top T. T/Sgt. A. Santoro

Alternate Height: 24500 ft Sgt. R. E. Frymoyer Ball T.

Last Resort, Heading: 265 m. Sgt. S. H. Hallman R. Waist

Duration Bomb Run: 30 seconds Sgt. B. L. Fassig L. Waist

Sgt. H. W. Hoser Tail G.

3. Number of BOMBS dropped on target: Jettisoned: Returned: Abortive:

4. Observed RESULTS OF BOMBING: (For this plane or others)

Own Bombs: no.

Other Bombing: Some short in water, some on AP. Some on entrance to beam.

5. Any PHOTOGRAPHS taken: Yes? No? (No)

6. GROUND TARGETS ATTACKED BY GUNFIRE AND RESULTS: 3 4

7. ROUTE (If different than ordered) (If ABORTIVE give time, place, height of turn; reason for returning early, and disposition of bombs.)

Slow turn into target Route as ordered.

8. WEATHER: (If it affected mission) Clear

9. FLAK: Encountered on way out, at target and on way home.

Time	Place	Height of A/C	Type (light, heavy), intense, moderate or slight.	Color of Bursts	Location of Bursts in relation to A/C	Accuracy
------	-------	---------------	---	-----------------	---------------------------------------	----------

1707 Target. Heavy moderate accurate as to altitude and direction

Directed fire

Gunney some flak on at 1620 hrs not close

Crew observations about Flak:

DECLASSIFIED PER EXECUTIVE ORDER 12356, Section 3.3, 74500

WARA Date 1/8/91

By RLB/BAC

10. ENEMY FIGHTER OPPOSITION:

5 or 6 E/A. Near low group, about 17 zhrs.
(Estimated total number of E/A seen) (Types)

(Location and length of fight)

(Tactics of E/A)

(Color, markings, etc. of E/A)

(Our defensive action)

CLAIMS	
DESTROYED	_____
PROBABLY	_____
DAMAGED	_____

(Fill out immediately separate CLAIM FORM for each claim.)

11. FIGHTER SUPPORT

Late in joining about 10 minutes after crossing French coast on way home.

12. OBSERVATIONS: Give TIME, PLACE, HEIGHT (list any observations of military importance such as balloons, delays, queues, camouflage, smoke screens, enemy signals; activity at airbases, ports, waterways, roads, railroad yards; concentrations of vehicles, troops, vessels; landmarks, new enemy installations,

④ B17 - 17 zhrs #4 Engine started smoking broke into on way down nose section chutes out. Ineffective fuselage screen

13. INCIDENTS TO FRIENDLY A/C: (If one of our A/C lost, state whether by A.A., E/A Action, Accident or Undetermined Cause)

14. INJURIES TO CREW: (Give name, position in A/C, type of injury, how received, PLACE and TIME.)

15. DAMAGE TO A/C: (Briefly) *none*
fak holes in tail and fuselage top turret and nose window broken by shell casings.

16. TECHNICAL FAILURES: *none*

17. CREW COMMENTS: (Any unusual incidents? Any suggestions?)

S-2 OFFICER

Capt Low Glass

FORM COMPLETED

DECLASSIFIED PER EXECUTIVE ORDER 12356, Section 3.3, 745005
By RLB/JAC MABA Date 1/8/94

73

INTERROGATION FORM

SQUADRON 367 368 369 423 A/C Number 900 Letter _____ Date 21/5/43

Bomb Load 2x1000 H.E. Incendi. _____ Position in Formation _____

Time Took Off 1325 Time Landed 20:30

		X	X	X	X
X	X				
X		X	X		X
X	X		X		X
X					X

1. HOT NEWS to be phoned in? Yes No

1817 18 charts down 30 miles in land from H.Ant.
1817 shot to hell with fish. Rins came off. spr charts seen.

CREW: Give Rank and Initials

Friendly A/C in any kind of distress? (Give position, time, altitude, full details)

1817. over water 6 charts seen this morning
over target low and slow. fighting later got him.

- Lt. R.W. JONES Pilot
- 1st Lt. J.A. Steele CO-P
- 1st Lt. J.S. Cheney Nav.
- 1st Lt. L.E. Drew Bomb.
- T/S RT Stymaker Radio
- T/S LL Bamforth Top T.
- S/S W Piotrowski Ball T.
- T/S WE Hall R. Waist
- S/S E.J. Stokoski L. Waist
- S/S J.E. Smoot Tail G.

2. TARGET ATTACKED:

Primary Time: 1706

Alternate Height: 25300

Last Resort Heading: 255° mag. (circle)

Duration Bomb Run: 30 seconds level
night 20 seconds.

- T/S LL Bamforth Top T.
- S/S W Piotrowski Ball T.
- T/S WE Hall R. Waist
- S/S E.J. Stokoski L. Waist
- S/S J.E. Smoot Tail G.

3. Number of BOMBS dropped on target: 2. Jettisoned: _____ Returned: _____ Abortive: _____

4. Observed RESULTS OF BOMBING: (For this plane or others)

Own Bombs: and our group got 1 hit where digger channel. Rest of group seemed to hit mostly on land around A.P.

Other Bombing: _____

5. Any PHOTOGRAPHS taken: Yes? No? (No)

6. GROUND TARGETS ATTACKED BY GUNFIRE AND RESULTS: none.

7. ROUTE (If different than ordered) (If ABORTIVE give time, place, height of turn, reason for returning early, and disposition of bombs)

Hit coast 3 miles left of Enniscorthy. Had chero close to Enniscorthy. Rest of front o.k. Little right / coast at Enniscorthy. Landed at Hangell flt when got out of gas at 1855

8. WEATHER: (If it affected mission) Good.

9. FLAK: Encountered on way out, at target and on way home.

Time	Place	Height of A/C	Type (light, color, or nature of shot)	Color of Bursts	Location of Bursts in relation to A/C	Accuracy
------	-------	---------------	--	-----------------	---------------------------------------	----------

1706 Target. 25300. Not much. Black. Accurate.
 Definitely aim at us. Hit 2 holes in tail 2 holes in struts.
 1 elevator control tab hit by flak over target.
 Red flak off to left couple of miles in coast 8 charts in line.
 ... P.1 chero Band chero 4 charts in row + one off to side.

DECLASSIFIED PER EXECUTIVE ORDER 12356, Section 3.3, 74500
By RLB/JAC Date 1/8/94