

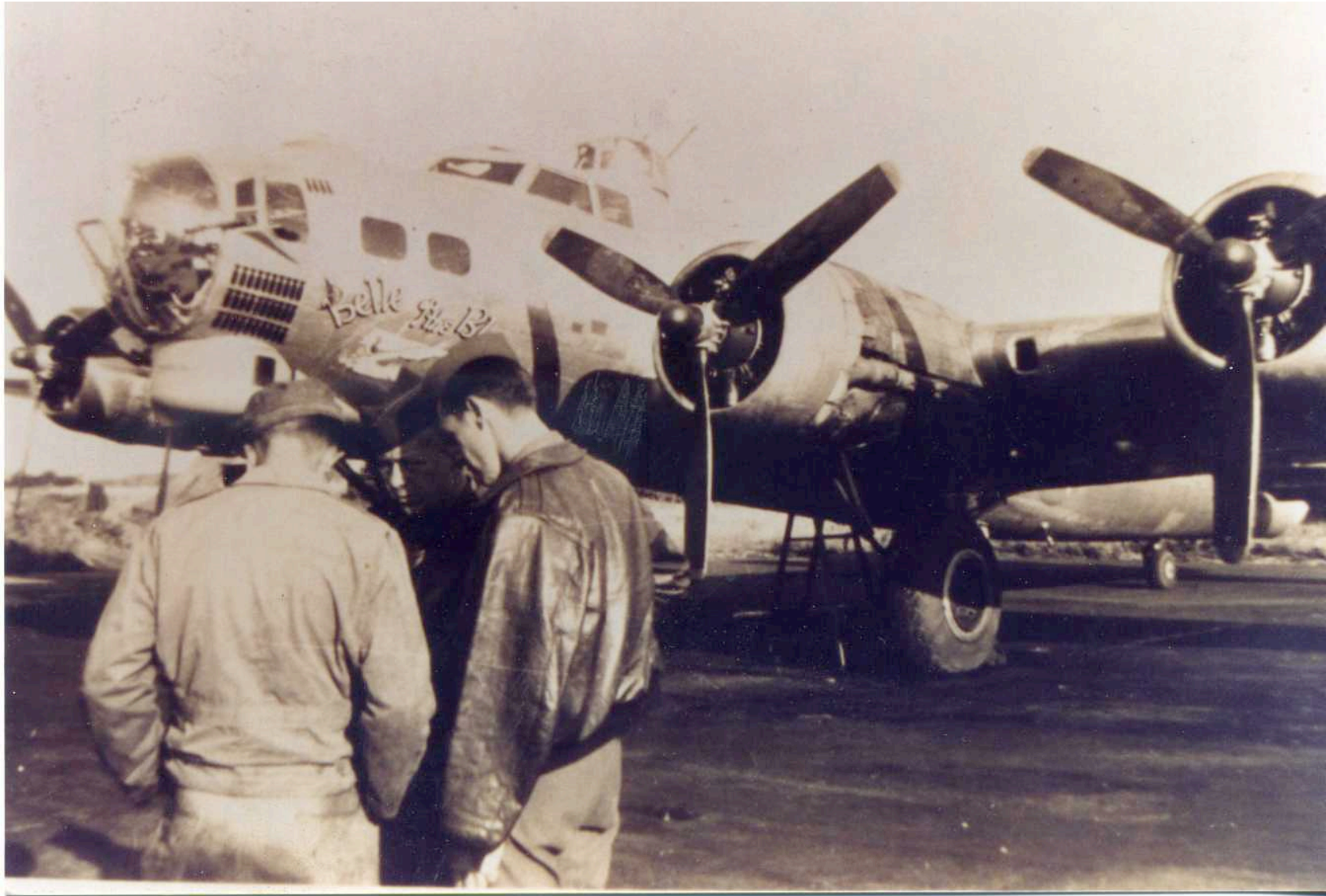


42-102503 'Belle of the Blue'

model B-17G-50-B0

lost 12 September 1944, target Ruhland







Belle of the Blue

U.S. ARMY MODEL B-17G-50-B0
AIR FORCES SERIAL NO. 42-102503
CREW WEIGHT 1200 LBS. 026001-R

CAUTION THIS AIRPLANE
WITH 100 OCTANE FUEL
ONLY
FUEL SYSTEM SUITABLE
FOR HIGH ALTITUDE FUELS.